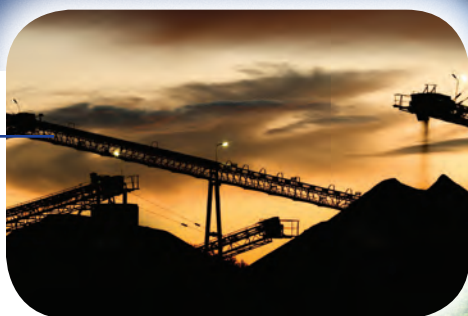




SELF-PRIMING TRASH PUMPS



RELAX,
IT'S A BERKELEY

SELF PRIMING TRASH PUMPS

BS SERIES

You can depend on BERKELEY self-priming trash pumps to provide years of reliable service.



Applications:

- Agricultural irrigation
- Tailwater recirculation
- Wastewater transfer
- Dewatering
- Industrial plants
- Food processing
- Vehicle washdown areas

Features:

- Flows to 2500 GPM
- Heads to 150'
- Reprime lifts to 25'
- Dual tungsten carbide seal design, buna elastomers
- Up to 3-1/2" Maximum solids handling
- Heavy duty ball bearing design
- Direct or V-bolt drive mounting configurations
- External impeller clearance adjustment
- Removable rotating assembly and suction cover
- Serviceable flap check valve

Economical

BERKELEY self-primers are available in 4", 6" and 8" discharge models. Designed for economical long-term operation.

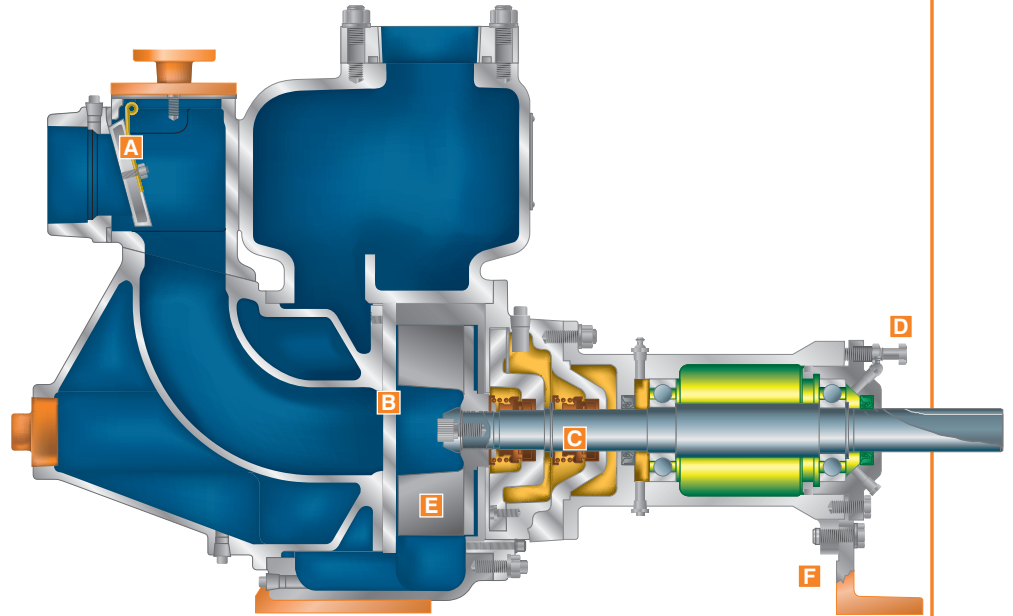
Easy installation and start-up

You mount the BERKELEY self-primer on top of the wet well or sump and drop the piping into the wet well. Connect piping, fill the case with water, power up and you're running.

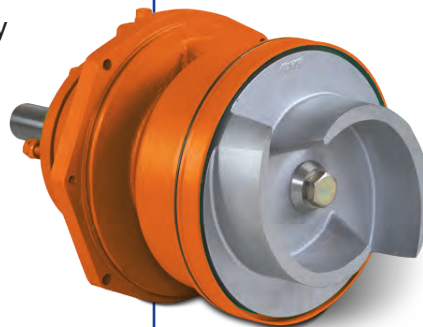
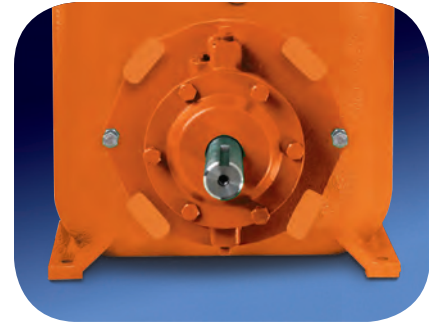
When you turn the pump on, it automatically primes. The flap check valve retains the prime in the pump and suction leg to give you worry-free operation.

Money-saving features:

- **Flap Check Valve** — Knock-off handles allow easy access for cleaning or replacing the flap check valve. Saves you time, energy and money.
- **Wear Plate** — The wear plate and volute lip are easily replaceable to keep your pump at optimum performance.
- **Seals** — John Crane Type 21 mechanical dual seal system operates in an oil chamber to provide long pump service life. Tungsten Carbide seal faces with Buna elastomers are standard.
- **External Adjustment** — Cap screws allow you to easily adjust the clearance between the impeller and wear plate to maintain original peak efficiency and performance.
- **Impeller** — The two vane, semi-open impeller easily handles solids and stringy materials to give you dependable pumping action. Pump-out vanes on the back shroud keep grit and media away from the seal area for longer life.
- **Removable Rotating Assembly** — To allow for bench top repair.



External adjustment saves downtime and extends the life of impeller/wear plate.



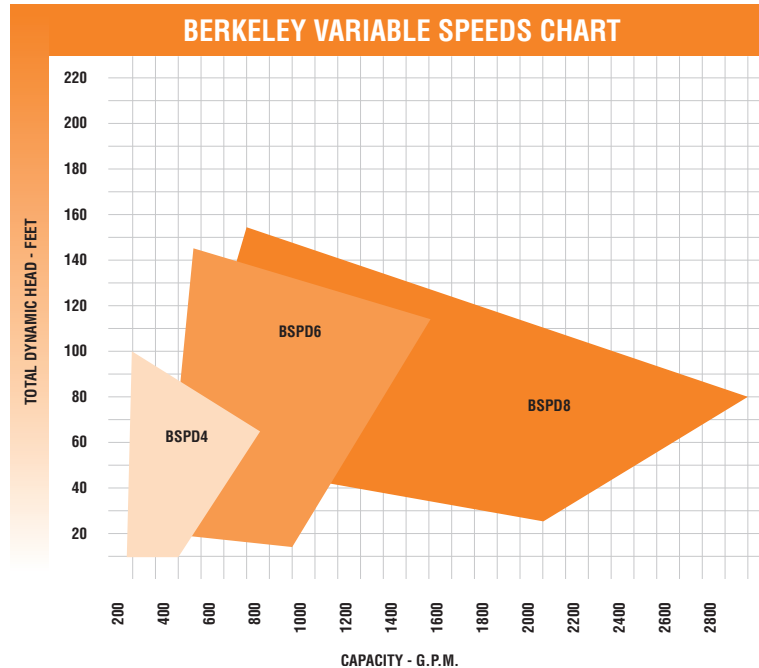
Removable rotating assembly.

Serviceable flap valve without draining the pump.



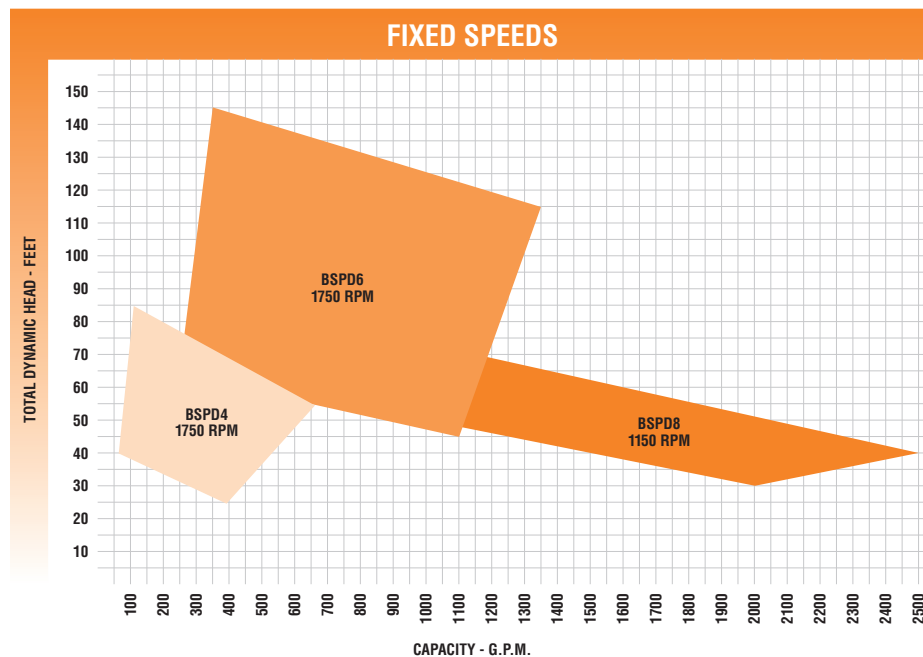
RELAX,
IT'S A BERKELEY

COMPOSITE PERFORMANCE CURVES



Pump Nomenclature

B	BERKELEY
S	Solids handling
P	Self-priming
D	Double Mechanical Seal
4	4" Discharge
6	6" Discharge
8	8" Discharge



For more information,
contact BERKELEY
Customer Service at:
Tel: 888.237.5353
Fax: 800.321.8793

