

DIMENSIONS AND WEIGHTS

MODEL NO.	FIG.	HP	MOTOR SIZE	DISCH. SIZE	DIMENSIONS IN INCHES					APPROX. SHIP WT.
					A	B	C	D	E	
625S150-1A	A	15	6"	6" NPT	50.6	25	25.6	5.4	8.3	208
625S250-1	A	25	6"	6" NPT	58.7	33.1	25.6	5.4	8.3	235
625S300-2AA	A	30	6"	6" NPT	63.8	32	31.8	5.4	8.3	296
625S400-2A	A	40	6"	6" NPT	66.2	34.4	31.8	5.4	8.3	307
625S400-2*	A	40	6"	6" NPT	66.2	34.4	31.8	5.4	8.3	320
625S500-3AA*	A	50	6"	6" NPT	93.6	55.7	37.9	5.4	8.3	415
625S600-3A*	A	60	6"	6" NPT	99.6	61.7	37.9	5.4	8.3	448
625S600-3*	A	60	6"	6" NPT	99.6	61.7	37.9	5.4	8.3	448
625S750-4AA	A	75	8"	6" NPT	91.4	47.4	44.0	7.5	8.6	560
625S750-4A	A	75	8"	6" NPT	91.4	47.4	44.0	7.6	8.6	560
625S1000-4	A	100	8"	6" NPT	98.9	54.9	44.0	7.6	8.6	638
625S1000-5AA	A	100	8"	6" NPT	105.0	54.9	50.1	7.6	8.6	661
625S1000-5A	A	100	8"	6" NPT	105.0	54.9	50.1	7.6	8.6	661
625S1000-5	A	100	8"	6" NPT	105.0	54.9	50.1	7.6	8.6	661
625S1250-6AA	A	125	8"	6" NPT	125.0	68.8	56.2	7.7	8.6	855
625S1250-6A	A	125	8"	6" NPT	125.0	68.8	56.2	7.7	8.6	855
625S1250-6	A	125	8"	6" NPT	125.0	68.8	56.2	7.7	8.6	855
625S1250-7AA	A	125	8"	6" NPT	131.2	68.8	62.4	7.7	8.6	890
625S1500-7A	A	150	8"	6" NPT	140.2	77.8	62.4	7.7	8.6	983
625S1500-7	A	150	8"	6" NPT	140.2	77.8	62.4	7.7	8.6	983

NOTES: All models suitable for use in 10" wells unless otherwise noted.
 Weights include pump end with motor in lbs.
 *Alternate motor sizes available.

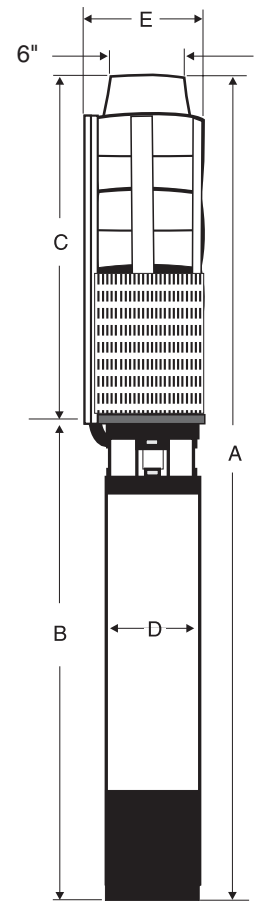
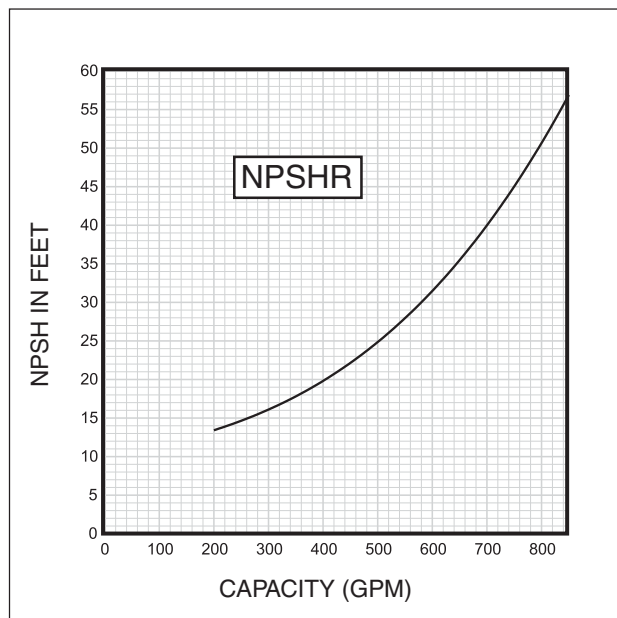


Fig. A

MATERIALS OF CONSTRUCTION

COMPONENT	CYLINDRICAL SHAFT (1-7 Stgs.)
Valve Housing	304 Stainless Steel
Check Valve	304 Stainless Steel
Diffuser Chamber	304 Stainless Steel
Split Cone Nut	304 Stainless Steel
Split Cone	304 Stainless Steel
Impeller	304 Stainless Steel
Suction Interconnector	304 Stainless Steel
Inlet Screen	304 Stainless Steel
Straps	304 Stainless Steel
Cable Guard	304 Stainless Steel
Coupling	316/329 Stainless Steel
Pump Shaft	431 Stainless Steel
Intermediate Bearings	NBR
Impeller Seal Ring	NBR/PPS
Check Valve Seat	NBR/316 Stainless Steel
Top Bearing	NBR/304 Stainless Steel
Uphrust Disc	Carbon/Graphite HY22
Check Valve Spring	401 Stainless Steel
O-Ring	NBR
Valve Seat	304 Stainless Steel
Lower Valve Seat Retainer	304 Stainless Steel
Upper Valve Seat Retainer	316 Stainless Steel
Valve Guide	304 Stainless Steel

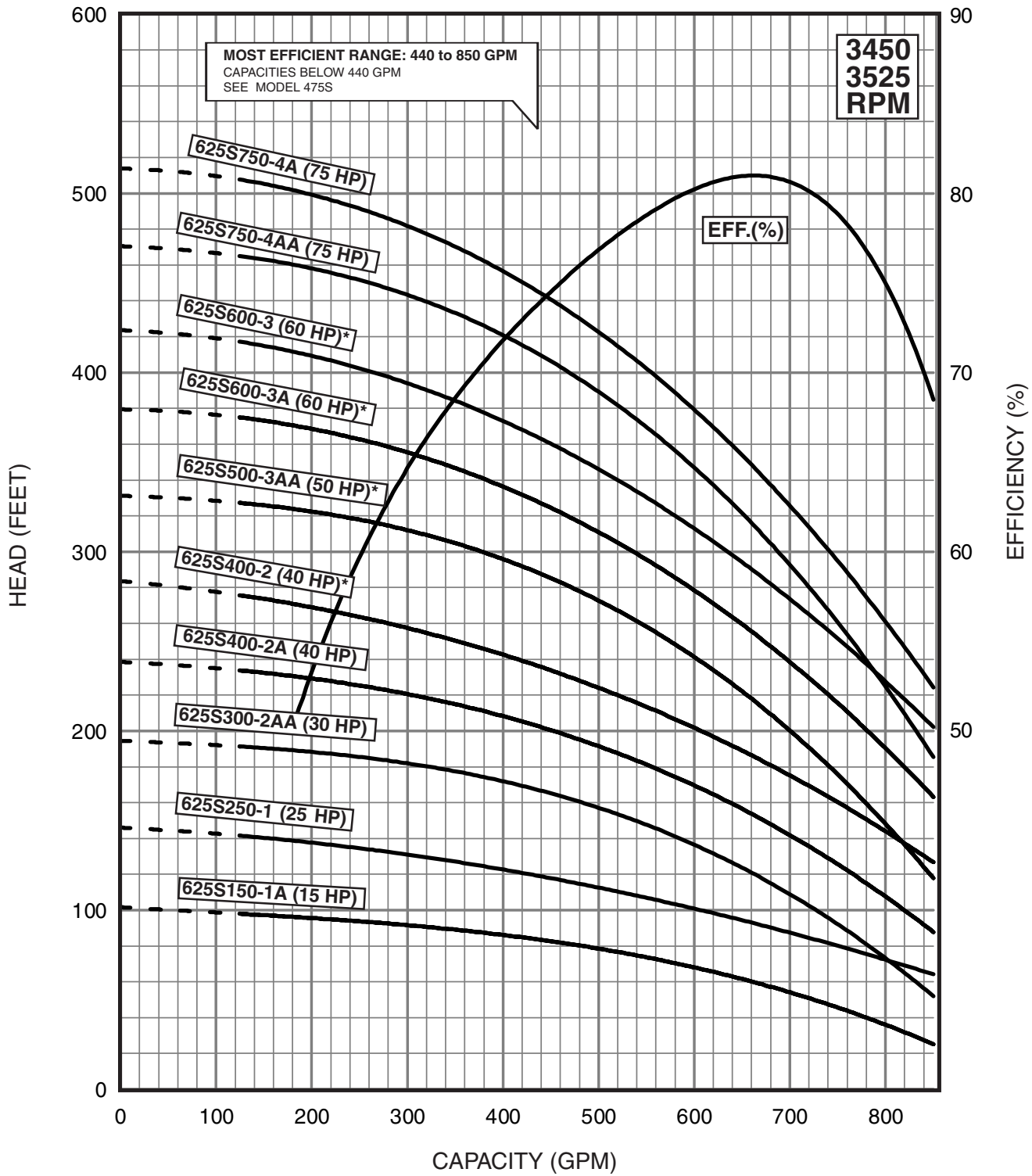
NOTES: Specifications are subject to change without notice.



FLOW RANGE: 125 - 850 GPM

OUTLET SIZE: 6" NPT

NOMINAL DIA. 10"



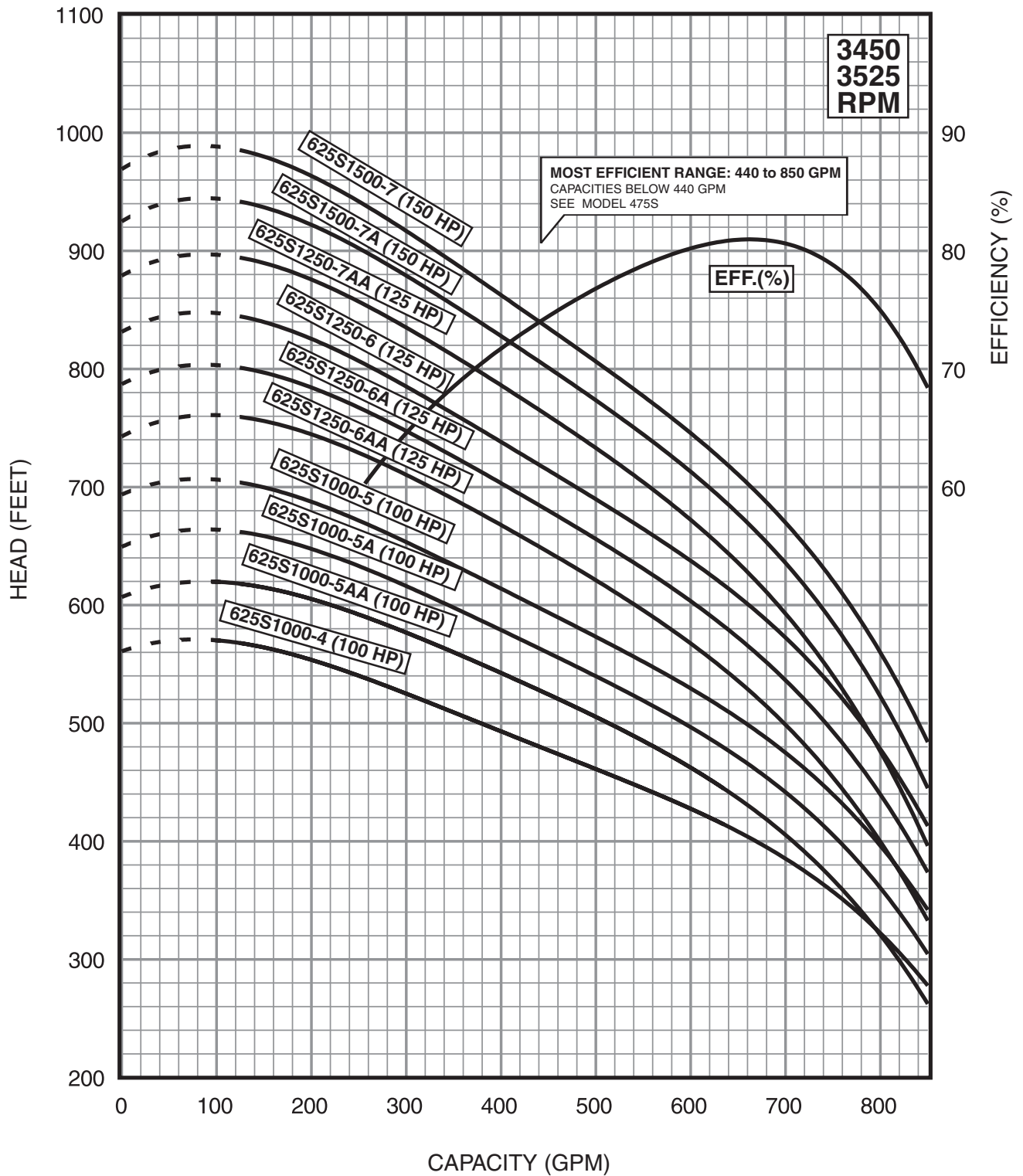
SPECIFICATIONS SUBJECT TO CHANGE WITHOUT NOTICE.
6" MOTOR STANDARD, 15-60 HP/3450 RPM.
8" MOTOR STANDARD, 75-150 HP/3525 RPM.
* Alternate motor sizes available.

Performance conforms to ISO 9906 Annex A
@ 10 ft. min. submergence.

FLOW RANGE: 125 - 850 GPM

OUTLET SIZE: 6" NPT

NOMINAL DIA. 10"



SPECIFICATIONS SUBJECT TO CHANGE WITHOUT NOTICE.
 6" MOTOR STANDARD, 15-60 HP/3450 RPM.
 8" MOTOR STANDARD, 75-150 HP/3525 RPM.
 * Alternate motor sizes available.

Performance conforms to ISO 9906 Annex A @ 10 ft. min. submergence.