

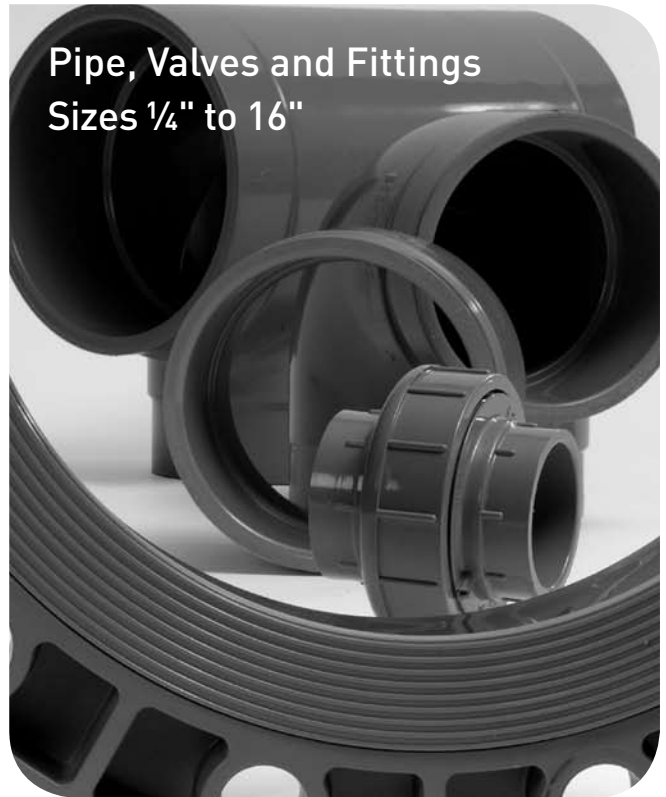
Section 1

Schedule 80 PVC Piping System

Serviced by GF Little Rock

Effective March 27, 2006

Pipe, Valves and Fittings
Sizes 1/4" to 16"



Glossary

- Std. Pack** = Standard Carton Quantity
- FPT** = Female Pipe Thread
- MPT** = Male Pipe Thread
- S** = Tapered Socket
- SPG** = Spigot End (same dimension as pipe outside diameter)
- HS** = High Strength Design
- SL** = Streamline Design
- XXX-XXXFB** = Assembled Fitting from Molded Components
- XXX-XXXH** = Fabricated Fitting

Product Line	Description	Discount
46	PVC Pressure Pipe - 20 ft. Lengths Plain End	_____
48	PVC Pressure Pipe - 20 ft. Lengths Bell End	_____
08	PVC Pressure Fittings - Molded	_____
34	PVC Pressure Expansion Joint	_____
33	PVC Pressure Brass Insert Fittings	_____
02	PVC Pressure LD Fittings - Molded	_____
05	PVC Pressure LD Fittings - Fabricated	_____
37	PVC Type 546 True Union Ball Valve	_____
13	PVC Type 375 True Union Ball Valve	_____
71	PVC Type 374 H ₂ O True Union Ball Valve	_____
73	PVC Type 567 Butterfly Valve	_____

The technical information given in this publication implies no warranty of any kind and is subject to change without notice. Please consult our Terms and Conditions of Sale.

Not for Use with Compressed Air or Gases

DO NOT TEST with Air or Air over Water

GF Piping DOES NOT RECOMMEND the use of thermoplastic piping products for systems to transport or store compressed air or gases, or the testing of thermoplastic piping systems with compressed air or gases in above or below ground locations. The use of GF Piping products in compressed air or gas systems automatically voids the warranty for such products, and their use against our recommendation is entirely the responsibility and liability of the installer. GF Piping will not accept responsibility for damage or impairment from its products, or other consequential or incidental damages caused by misapplication, incorrect assembly, and/or exposure to harmful substances or conditions.

For more information about any of our product lines, please call (501) 490-7777.

Table of Contents

Schedule 80 PVC Piping System

Specifications, Standards and Tolerances	1.4
--	-----

Pipe (1/2"-16")	1.5
-----------------	-----

Fittings (1/4"-8")

Molded	1.6
Expansion Joints	1.19
Brass Insert	1.20

Large Diameter Fittings (10"-16")

Large Diameter Molded	1.21
Large Diameter Fabricated	1.22

Manual Valves

Type 546 and Type 375 ball valves	1.28
Type 374 ball valve	1.29
Type 567 butterfly valve	1.30

Specification Submittal Data Sheet	1.32
------------------------------------	------

Specifications, Standards and Tolerances

Specifications and Standards

NSF/ANSI Standard 14

NSF/ANSI Standard 61

ASTM D 1784 : Material PVC Type I, Grade I Gray (cell classification 12454-B)

ASTM D 1785 : PVC Schedule 80 Pipe

ASTM D 2467 : PVC Schedule 80 Socket & Threaded Fittings

ASTM D 2464 : PVC Schedule 80 Threaded Fittings

ASTM F 1498 : PVC Schedule 80 Taper Threads

ASTM D 2672 : PVC Schedule 80 Tapered Sockets for Bell End Pipe

ASTM F 1970 : PVC Schedule 80 Unions & Flanges

ANSI B16.5 : Outside Diameter & Flange Bolt Hole Patterns

ANSI B1.20.1 : PVC Schedule 80 NPT Threads

CSA B137.3 : PVC Schedule 80 Pipe

Molded Dimension Tolerances

A Piston Position; Expansion Joints : ± 0.03

D Outside Diameter : ± 0.06

G, G1 Intersections of centerlines to bottom of socket; 90° Ells, Tees : up to 4" ± 0.03 ; 6" and above ± 0.06

GJ, GN Intersections of centerlines to bottom of socket; 45° Wyes : up to 4" ± 0.03 ; 6" and above ± 0.06

H, HJ, HN Intersections of centerlines to face of fitting; 90° Ells, 45° Ells, Tees, 45° Wyes : up to 4" ± 0.03 ; 6" and above ± 0.06

HL Socket Bottom to Face of Fitting : up to 4" ± 0.03 ; 6" and above ± 0.06

J Intersections of centerlines to bottom of socket; 45° & 30° Ells : up to 4" ± 0.03 ; 6" and above ± 0.06

L Overall Length of fitting : ± 0.06

N Socket Bottom to Socket Bottom; Couplings, Unions : ± 0.06

N1 Socket Bottom to Face of Flange : ± 0.06

R Thickness on Plugs, Flanges : ± 0.03

T, T1 Effective Thread Length : Reference Only

W Height of Cap : ± 0.06

Fabricated Dimension Tolerances

D Outside Diameter : ± 0.50

E Drive Pin Diameter : ± 0.50

G, G1 Intersections of centerlines to bottom of socket; 90° Ells, Tees, Crosses : ± 0.25

GJ, GN Intersections of centerlines to bottom of socket; 45° Wyes : ± 0.25

H, HJ, HN Intersections of centerlines to face of fitting; 90° Ells, 45° Ells, Tees, 45° Wyes, True Wyes : ± 0.50

HL Socket Bottom to Face of Fitting : ± 0.25

J Intersections of centerlines to bottom of socket; 11¼°, 15°, 30°, 22½°, 45° Ells, True Wyes : ± 0.25

L Overall Length of fitting : ± 0.50

N Socket Bottom to Socket Bottom; Couplings : ± 0.50

N1 Socket Bottom to Face of Flange : ± 0.50

R Thickness on Plugs, Flanges : ± 0.25

T, T1 Effective Thread Length : Reference Only

W Height of Cap : ± 0.25

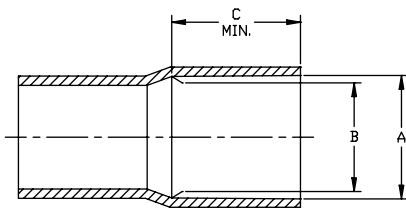
Schedule 80 PVC Pressure Pipe

P/L 46: PVC Pressure Pipe - 20 ft. lengths Plain End

P/L 48: PVC Pressure Pipe - 20 ft. lengths Bell End

Size	Part Number Plain End	Part Number Bell End	List \$/100 ft.	Lift Qty (ft.)	Average O.D.	Min. Wall	psi at 73° F
1/2	*8008-005AB	*8008-005BB	See Note	5600 ft.	0.840	0.147	848
3/4	*8008-007AB	*8008-007BB	"	5000 ft.	1.050	0.154	688
1	*8008-010AB	*8008-010BB	"	2360 ft.	1.315	0.179	630
1 1/4	*8008-012AB	*8008-012BB	"	1960 ft.	1.660	0.191	520
1 1/2	*8008-015AB	*8008-015BB	"	1800 ft.	1.900	0.200	471
2	*8008-020AB	*8008-020BB	"	1060 ft.	2.375	0.218	404
2 1/2	*8008-025AB	*8008-025BB	"	880 ft.	2.875	0.276	425
3	*8008-030AB	*8008-030BB	"	700 ft.	3.500	0.300	375
4	*8008-040AB	*8008-040BB	"	520 ft.	4.500	0.337	324
6	*8008-060AB	*8008-060BB	"	220 ft.	6.625	0.432	279
8	*8008-080AB	*8008-080BB	"	100 ft.	8.625	0.500	246
10	*8008-100AB	*8008-100BB	"	80 ft.	10.750	0.593	230
12	*8008-120AB	*8008-120BB	"	60 ft.	12.750	0.687	230
14	*8008-140AB	*8008-140BB	"	60 ft.	14.000	0.750	220
16	*8008-160AB	*8008-160BB	"	60 ft.	16.000	0.843	220

Note: For current pricing information please see separate price sheet or visit our website at www.gfpiping.com



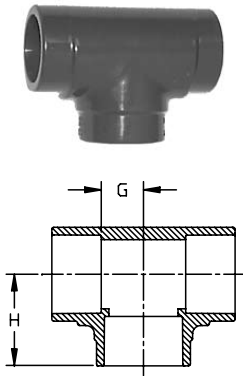
Belled Pipe Depth

Size	A		B		C
	Socket Entrance		Socket Bottom		(minimum)
1/2	0.848	± 0.004	0.836	± 0.004	1.000
3/4	1.058	± 0.004	1.046	± 0.004	1.250
1	1.325	± 0.005	1.310	± 0.005	1.500
1 1/4	1.670	± 0.005	1.655	± 0.005	1.750
1 1/2	1.912	± 0.006	1.894	± 0.006	2.000
2	2.387	± 0.006	2.363	± 0.006	2.250
2 1/2	2.889	± 0.007	2.861	± 0.007	2.500
3	3.516	± 0.008	3.484	± 0.008	3.250
4	4.518	± 0.009	4.482	± 0.009	4.000
6	6.647	± 0.011	6.603	± 0.011	6.000
8	8.655	± 0.015	8.598	± 0.015	6.000
10	10.776	± 0.015	20.722	± 0.015	7.500
12	10.778	± 0.015	12.721	± 0.015	8.500
14	14.035	± 0.015	13.985	± 0.015	9.000
16	16.045	± 0.015	15.980	± 0.015	10.000

Dimensions are subject to change. Please see online "Price Lists" at <http://www.gfpiping.com> for up-to-date information.

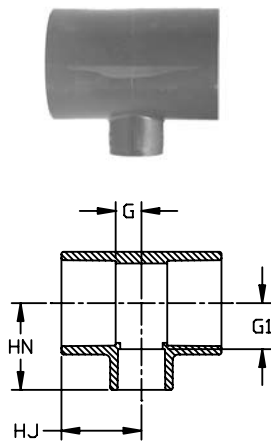
Schedule 80 PVC Pressure Fittings

P/L 08: Molded Fittings



Tee (S x S x S)

Size	Part Number	Std Pack	H	G	Design
1/4	801-002	50	0.92	0.29	HS
3/8	801-003	50	1.16	0.40	HS
1/2	801-005	25	1.49	0.50	SL
3/4	801-007	25	1.61	0.56	SL
1	801-010	20	1.86	0.72	SL
1 1/4	801-012	5	2.19	0.91	HS
1 1/2	801-015	5	2.44	1.06	HS
2	801-020	5	2.82	1.32	HS
2 1/2	801-025	5	3.33	1.50	HS
3	801-030	5	3.75	1.85	HS
4	801-040	5	4.63	2.38	HS
6	801-060	2	6.63	3.55	HS
8	801-080	1	8.63	4.59	HS

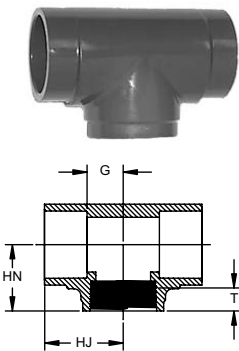


Reducing Tee (S x S x S)

Size	Part Number	Std Pack	HJ	HN	G	G1	Design
1/2x1/4	801-072FB	5	1.39	1.63	0.52	0.96	SL
3/4x1/2	801-101	25	1.63	1.63	0.61	0.73	SL
1x1/2	801-130	25	1.88	1.63	0.73	0.75	SL
1x3/4	801-131	20	1.88	1.87	0.73	0.86	SL
1 1/4x1	801-168	20	2.00	2.00	0.73	0.91	SL
1 1/2x1/2	801-209FB	5	2.41	2.70	1.03	1.82	SL
1 1/2x3/4	801-210	5	2.00	2.00	0.61	1.05	SL
1 1/2x1	801-211	5	2.13	2.20	0.73	0.81	SL
2x1/2	801-247FB	5	2.78	3.06	1.28	1.22	SL
2x3/4	801-248FB	5	2.13	2.31	0.73	1.29	SL
2x1	801-249	5	2.25	2.44	0.73	1.26	SL
2x1 1/2	801-251	5	2.56	2.69	1.05	1.29	SL
3x2	801-338	5	3.21	3.40	1.31	1.87	SL
4x2	801-420	5	3.52	3.88	1.26	2.37	SL
4x3	801-422	5	4.15	4.31	1.87	2.39	SL
6x2	801-528FB	1	6.58	7.21	3.56	5.65	HS
6x3	801-530FB	2	6.58	7.21	3.56	5.26	HS
6x4	801-532	2	6.58	6.81	3.49	4.50	HS
8x6	801-585	1	7.63	7.59	3.59	3.56	HS

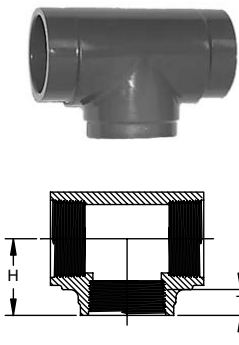
HS = High Strength Design
SL = Slim Line Design

Dimensions are subject to change. Please see online "Price Lists" at <http://www.gfpiping.com> for up-to-date information.



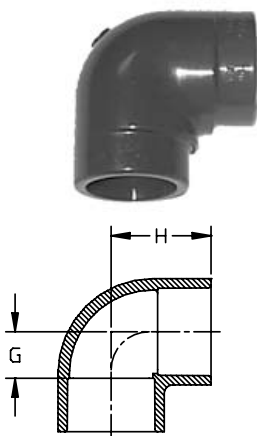
Tee (S x S x FPT)

Size	Part Number	Std. Pack	HJ	HN	G	T	Design
1/2	802-005	25	1.39	1.39	0.52	0.53	HS
3/4	802-007	25	1.58	1.37	0.58	0.55	HS
1	802-010	15	1.83	1.70	0.70	0.68	HS
1 1/2	802-015	5	2.42	2.08	1.03	0.72	HS
2	802-020	5	2.79	2.35	1.28	0.76	HS



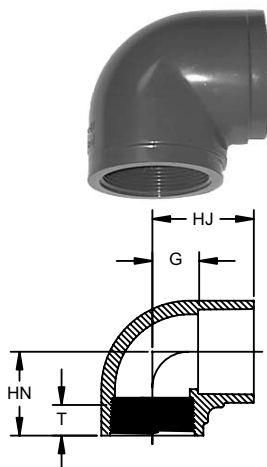
Tee (FPT x FPT x FPT)

Size	Part Number	Std. Pack	H	T	Design
1/4	^805-002	50	0.92	0.40	HS
3/8	^805-003	50	1.16	0.41	HS
1/2	^805-005	25	1.27	0.53	HS
3/4	^805-007	25	1.38	0.55	HS
1	^805-010	15	1.70	0.68	HS
1 1/4	^805-012	10	1.93	0.71	HS
1 1/2	^805-015	5	2.08	0.72	HS
2	^805-020	5	2.35	0.76	HS
2 1/2	^805-025	5	2.88	1.14	HS
3	^805-030	5	3.50	1.20	HS
4	^805-040	5	4.06	1.30	HS



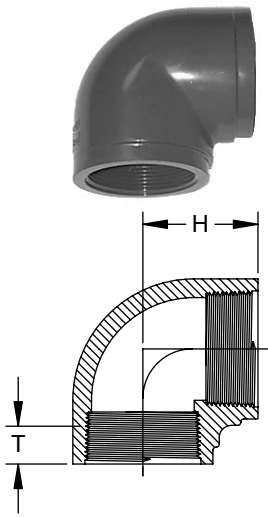
90° Ell (S x S)

Size	Part Number	Std. Pack	H	G	Design
1/4	806-002	50	0.95	0.33	HS
3/8	806-003	50	1.17	0.41	HS
1/2	806-005	25	1.41	0.50	SL
3/4	806-007	25	1.61	0.56	SL
1	806-010	10	1.86	0.69	SL
1 1/4	806-012	10	2.16	0.91	HS
1 1/2	806-015	10	2.41	1.03	HS
2	806-020	5	2.78	1.28	HS
2 1/2	806-025	5	3.29	1.53	HS
3	806-030	5	3.75	1.85	HS
4	806-040	5	4.59	2.34	HS
6	806-060	1	6.70	3.51	HS
8	806-080	1	8.52	4.47	HS



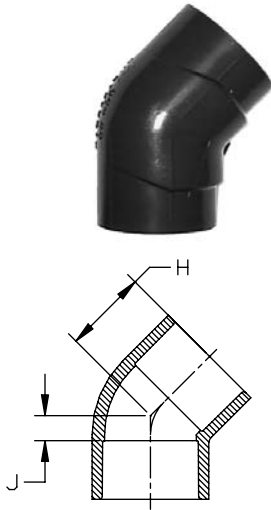
90° Ell (S x FPT)

Size	Part Number	Std. Pack	HJ	HN	G	T	Design
1/2	807-005	25	1.38	1.28	0.50	0.53	HS
3/4	807-007	25	1.57	1.38	0.56	0.55	HS
1	807-010	10	1.82	1.70	0.69	0.68	HS
1 1/4	807-012	10	2.16	1.93	0.91	0.71	HS
1 1/2	807-015	10	2.41	2.07	1.03	0.72	HS
2	807-020	5	2.78	2.35	1.28	0.76	HS
3	807-030	5	3.75	3.50	1.85	1.20	HS



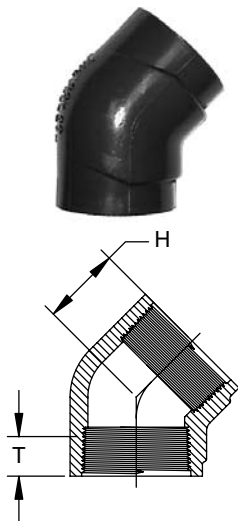
90° Ell (FPT x FPT)

Size	Part Number	Std. Pack	H	T	Design
1/4	^808-002	50	0.92	0.40	HS
3/8	^808-003	50	1.00	0.41	HS
1/2	^808-005	25	1.29	0.53	HS
3/4	^808-007	20	1.38	0.55	HS
1	^808-010	10	1.70	0.68	HS
1 1/4	^808-012	10	1.93	0.71	HS
1 1/2	^808-015	10	2.06	0.72	HS
2	^808-020	5	2.36	0.76	HS
2 1/2	^808-025	5	3.00	1.14	HS
3	^808-030	5	3.50	1.20	HS
4	^808-040	5	4.13	1.30	HS



45° Ell (S x S)

Size	Part Number	Std. Pack	H	J	Design
1/4	817-002	50	0.81	0.13	HS
3/8	817-003	50	0.94	0.19	HS
1/2	817-005	25	1.21	0.25	SL
3/4	817-007	20	1.32	0.33	SL
1	817-010	25	1.47	0.29	SL
1 1/4	817-012	15	1.68	0.38	HS
1 1/2	817-015	10	1.88	0.44	SL
2	817-020	5	2.16	0.60	SL
2 1/2	817-025	5	2.48	0.65	HS
3	817-030	5	2.68	0.73	HS
4	817-040	5	3.24	0.95	SL
6	817-060	1	4.83	1.73	HS
8	817-080	1	6.08	1.98	HS

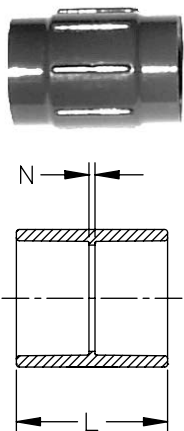


45° Ell (FPT x FPT)

Size	Part Number	Std. Pack	H	T	Design
1/4	^819-002	50	0.76	0.40	HS
3/8	^819-003	50	0.94	0.41	HS
1/2	^819-005	25	1.02	0.53	HS
3/4	^819-007	20	1.14	0.55	HS
1	^819-010	25	1.33	0.68	HS
1 1/4	^819-012	15	1.40	0.71	HS
1 1/2	^819-015	10	1.52	0.72	HS
2	^819-020	5	1.72	0.76	HS
3	^819-030	5	2.44	1.20	HS
4	^819-040	5	2.77	1.30	HS

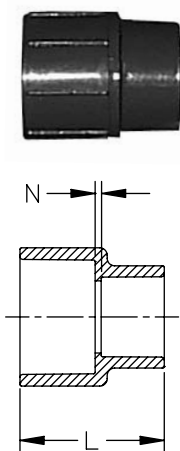
HS = High Strength Design
SL = Slim Line Design

Dimensions are subject to change. Please see online "Price Lists" at <http://www.gfpiping.com> for up-to-date information.



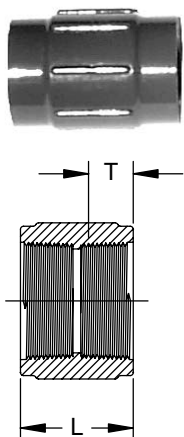
Coupling (S x S)

Size	Part Number	Std. Pack	L	N	Design
1/4	829-002	50	1.39	0.14	HS
3/8	829-003	50	1.64	0.14	HS
1/2	829-005	25	1.93	0.13	SL
3/4	829-007	20	2.18	0.13	SL
1	829-010	25	2.41	0.13	SL
1 1/4	829-012	10	2.78	0.16	HS
1 1/2	829-015	10	3.03	0.16	HS
2	829-020	5	3.28	0.16	HS
2 1/2	829-025	5	3.75	0.16	HS
3	829-030	5	4.04	0.25	SL
4	829-040	5	4.79	0.25	SL
6	829-060	2	6.41	0.34	HS
8	829-080	2	8.40	0.34	HS



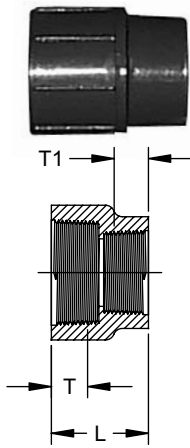
Reducing Coupling (S x S)

Size	Part Number	Std. Pack	L	N	Design
3/4 x 1/2	829-101	25	2.16	0.14	HS
1 x 1/2	829-130	25	2.12	0.09	HS
1 x 3/4	829-131	25	2.26	0.12	HS
1 1/4 x 1	829-168	25	2.54	0.09	HS
1 1/2 x 1/2	*829-209FB	5	3.34	0.17	HS
1 1/2 x 3/4	*829-210FB	5	3.34	0.17	HS
1 1/2 x 1	829-211	15	2.66	0.10	HS
1 1/2 x 1 1/4	829-212	20	2.82	0.10	HS
2 x 1/2	*829-247FB	5	3.35	0.88	HS
2 x 3/4	*829-248FB	5	3.36	0.77	HS
2 x 1	*829-249FB	5	3.35	0.66	HS
2 x 1 1/4	*829-250FB	25	3.37	0.52	HS
2 x 1 1/2	829-251	5	3.05	0.10	HS
2 1/2 x 1 1/2	829-291	25	3.30	0.13	HS
2 1/2 x 2	*829-292FB	1	4.00	0.65	HS
3 x 2	829-338	5	3.61	0.16	HS
4 x 2	*829-420FB	5	4.94	1.12	HS
4 x 3	829-422	5	4.39	0.26	HS
6 x 4	829-532	2	10.25	3.50	HS
8 x 6	829-585	2	9.12	2.07	HS



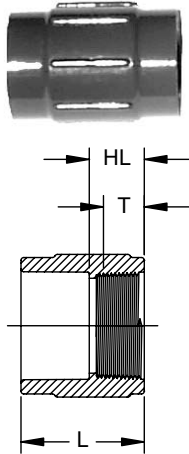
Coupling (FPT x FPT)

Size	Part Number	Std. Pack	L	T	Design
1/4	^830-002	50	1.30	0.40	HS
3/8	^830-003	50	1.34	0.41	HS
1/2	^830-005	25	1.66	0.53	HS
3/4	^830-007	20	1.73	0.55	HS
1	^830-010	25	2.10	0.68	HS
1 1/4	^830-012	10	2.19	0.71	HS
1 1/2	^830-015	10	2.22	0.72	HS
2	^830-020	5	2.29	0.76	HS
2 1/2	^830-025	5	3.39	1.14	HS
3	^830-030	5	3.57	1.20	HS
4	^830-040	5	3.73	1.30	HS



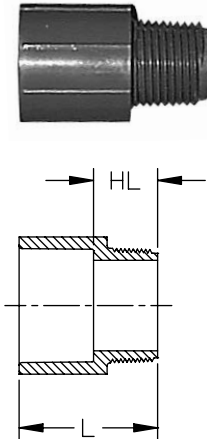
Reducing Coupling (FPTxFPT)

Size	Part Number	Std. Pack	L	T	T1	Design
3/8 x 1/4	^830-052	50	1.29	0.41	0.40	HS
1/2 x 1/4	^830-072	50	1.45	0.53	0.40	HS
1/2 x 3/8	^830-073	50	1.46	0.53	0.41	HS
3/4 x 1/2	^830-101	25	1.69	0.55	0.53	HS
1 x 1/2	^830-130	25	1.83	0.68	0.53	HS
1 x 3/4	^830-131	25	1.88	0.68	0.55	HS
1 1/4 x 3/4	^830-167	25	1.91	0.71	0.55	HS
1 1/2 x 1	^830-211	20	2.11	0.72	0.68	HS
2 x 1 1/2	^830-251	10	2.11	0.76	0.72	HS



Female Adapter (SxFPT)

Size	Part Number	Std. Pack	HL	L	T	Design
1/4	835-002	50	0.75	1.43	0.40	HS
3/8	835-003	50	0.75	1.55	0.41	HS
1/2	835-005	25	0.91	1.79	0.53	HS
3/4	835-007	25	0.95	1.96	0.55	HS
1	835-010	25	1.11	2.26	0.68	HS
1 1/4	835-012	10	1.16	2.44	0.71	HS
1 1/2	835-015	10	1.19	2.58	0.72	HS
2	835-020	5	1.23	2.74	0.76	HS
2 1/2	835-025	5	1.75	3.50	1.14	HS
3	835-030	5	1.91	3.82	1.20	HS
4	835-040	5	2.02	4.29	1.30	HS

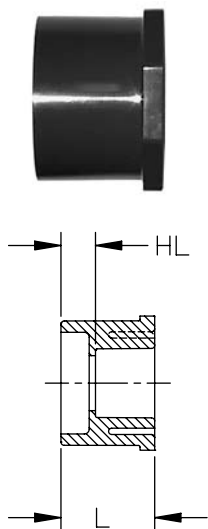


Male Adapter (SxMPT)

Size	Part Number	Std. Pack	HL	L	Design
1/2	836-005	50	0.98	1.86	HS
3/4	836-007	25	1.00	2.04	HS
1	836-010	25	1.21	2.39	HS
1 1/4	836-012	15	1.29	2.56	HS
1 1/2	836-015	10	1.32	2.72	HS
2	836-020	5	1.35	2.88	HS
2 1/2	836-025	5	1.87	3.68	HS
3	836-030	5	2.02	3.92	HS
4	836-040	5	2.08	4.40	HS

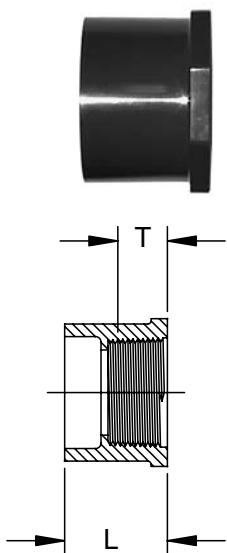
HS = High Strength Design
SL = Slim Line Design

Dimensions are subject to change. Please see online "Price Lists" at <http://www.gfpiping.com> for up-to-date information.



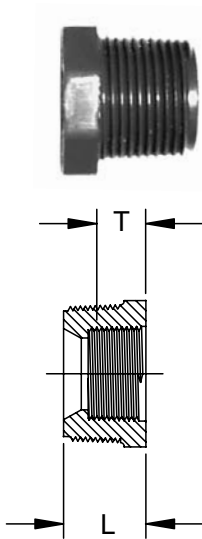
Flush Style Reducer Bushing (SpgxS)

Size	Part Number	Std. Pack	HL	L
1/2 x 1/4	837-072	50	0.46	1.14
1/2 x 3/8	837-073	50	0.32	1.10
3/4 x 1/2	837-101	50	0.40	1.29
1 x 1/2	837-130	25	0.54	1.42
1 x 3/4	837-131	50	0.44	1.42
1 1/4 x 3/4	837-167	25	0.55	1.57
1 1/4 x 1	837-168	25	0.42	1.57
1 1/2 x 1/2	837-209	25	0.77	1.68
1 1/2 x 3/4	837-210	25	0.67	1.69
1 1/2 x 1	837-211	25	0.55	1.68
1 1/2 x 1 1/4	837-212	25	0.42	1.70
2 x 1/2	837-247	10	0.88	1.79
2 x 3/4	837-248	10	0.78	1.81
2 x 1	837-249	10	0.66	1.81
2 x 1 1/4	837-250	10	0.56	1.82
2 x 1 1/2	837-251	5	0.40	1.80
2 1/2 x 1 1/2	837-291	5	0.96	2.43
2 1/2 x 2	837-292	5	0.55	2.13
3 x 1 1/4	*837-336FB	5	1.45	2.72
3 x 1 1/2	837-337	5	0.92	2.43
3 x 2	837-338	5	0.87	2.43
3 x 2 1/2	837-339	5	0.39	2.23
4 x 2	837-420	5	1.15	2.72
4 x 3	837-422	5	0.77	2.76
6 x 3	837-530	2	1.45	3.59
6 x 4	837-532	2	2.57	6.92
8 x 6	837-585	1	1.56	4.66



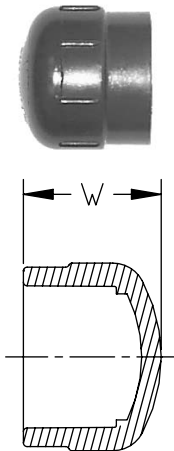
Flush Style Reducer Bushing (SpgxFPT)

Size	Part Number	Std. Pack	L	T
3/8 x 1/4	838-052	50	0.98	0.40
1/2 x 1/4	838-072	50	1.14	0.40
1/2 x 3/8	838-073	50	1.12	0.41
3/4 x 1/4	838-098	50	1.21	0.40
3/4 x 1/2	838-101	50	1.28	0.53
1 x 1/2	838-130	50	1.42	0.53
1 x 3/4	838-131	50	1.41	0.55
1 1/4 x 1/2	838-166	15	1.53	0.53
1 1/4 x 3/4	838-167	15	1.56	0.55
1 1/4 x 1	838-168	15	1.55	0.68
1 1/2 x 1/2	838-209	15	1.68	0.53
1 1/2 x 3/4	838-210	15	1.68	0.55
1 1/2 x 1	838-211	15	1.69	0.68
1 1/2 x 1 1/4	838-212	25	1.68	0.71
2 x 1/2	838-247	10	1.80	0.53
2 x 3/4	838-248	25	1.80	0.55
2 x 1	838-249	25	1.79	0.68
2 x 1 1/4	838-250	10	1.78	0.71
2 x 1 1/2	838-251	10	1.79	0.72
2 1/2 x 1 1/2	838-291	5	2.11	0.72
2 1/2 x 2	838-292	5	2.20	0.76
3 x 2	838-338	5	2.44	0.76
3 x 2 1/2	838-339	5	2.20	1.14
4 x 2	838-420	5	2.73	0.76
4 x 3	838-422	5	2.69	1.20



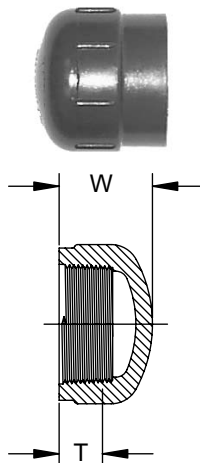
Flush Style Reducer Bushing (MPTxFPT)

Size	Part Number	Std. Pack	L	T
3/8 x 1/4	^839-052	50	0.79	0.40
1/2 x 1/4	^839-072	50	0.96	0.40
1/2 x 3/8	^839-073	50	0.94	0.40
3/4 x 1/4	^839-098	50	1.02	0.40
3/4 x 3/8	^839-099	50	1.02	0.41
3/4 x 1/2	^839-101	50	1.08	0.53
1 x 1/4	^839-128	25	1.22	0.40
1 x 1/2	^839-130	25	1.24	0.53
1 x 3/4	^839-131	25	1.27	0.55
1 1/4 x 1/2	^839-166	25	12.83	0.53
1 1/4 x 3/4	^839-167	25	1.29	0.55
1 1/4 x 1	^839-168	25	1.30	0.68
1 1/2 x 3/4	^839-210	25	1.33	0.55
1 1/2 x 1	^839-211	50	1.34	0.68
1 1/2 x 1 1/4	^839-212	20	1.32	0.71
2 x 1/2	^839-247	25	1.43	0.53
2 x 3/4	^839-248	25	1.43	0.55
2 x 1	^839-249	10	1.43	0.68
2 x 1 1/4	^839-250	10	1.43	0.71
2 x 1 1/2	^839-251	10	1.35	0.72
3 x 2	^839-338	5	2.03	0.76
4 x 2	^839-420	5	2.06	0.76
4 x 3	^839-422	5	2.06	1.20



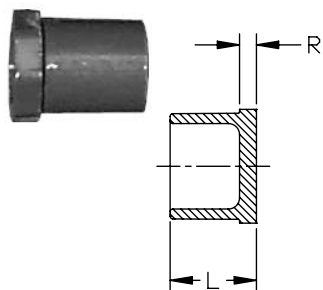
Cap (S)

Size	Part Number	Std. Pack	W	Design
1/4	847-002	50	0.95	HS
3/8	847-003	50	1.09	HS
1/2	847-005	50	1.29	HS
3/4	847-007	50	1.46	HS
1	847-010	25	1.67	HS
1 1/4	847-012	15	1.88	HS
1 1/2	847-015	10	2.09	HS
2	847-020	5	2.32	HS
2 1/2	847-025	5	2.73	HS
3	847-030	5	3.05	HS
4	847-040	5	3.67	HS
6	847-060	2	4.96	HS
8	847-080	2	7.02	HS



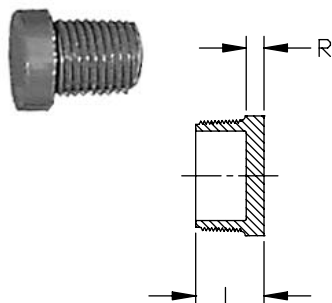
Cap (FPT)

Size	Part Number	Std. Pack	W	T	Design
1/4	^848-002	50	0.93	0.40	HS
3/8	^848-003	50	0.95	0.41	HS
1/2	^848-005	50	1.16	0.53	HS
3/4	^848-007	25	1.24	0.55	HS
1	^848-010	25	1.50	0.68	HS
1 1/4	^848-012	15	1.61	0.71	HS
1 1/2	^848-015	10	1.66	0.72	HS
2	^848-020	5	1.84	0.76	HS
2 1/2	^848-025	5	2.56	1.14	HS
3	^848-030	5	2.83	1.20	HS
4	^848-040	5	3.13	1.30	HS



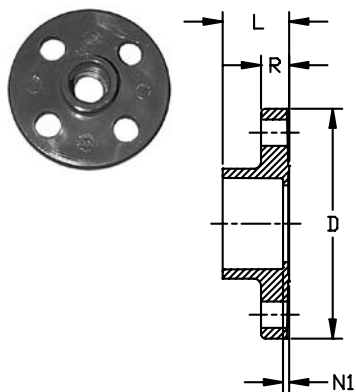
Plug (Spg)

Size	Part Number	Std. Pack	L	R
3/4	849-007	50	1.26	0.23
1	849-010	25	1.41	0.25
1 1/2	849-015	10	1.71	0.31
2	849-020	5	1.90	0.38
4	849-040	5	2.64	0.39



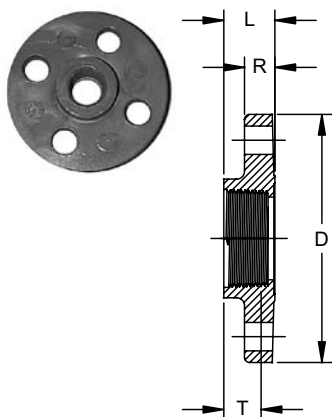
Plug (MPT)

Size	Part Number	Std. Pack	L	R
1/4	850-002	50	0.81	0.22
3/8	850-003	50	0.83	0.22
1/2	850-005	50	0.97	0.22
3/4	850-007	50	1.04	0.25
1	850-010	25	1.25	0.27
1 1/4	850-012	25	1.32	0.31
1 1/2	850-015	20	1.38	0.34
2	850-020	10	1.46	0.40
3	850-030	5	2.00	0.38
4	850-040	5	2.15	0.39



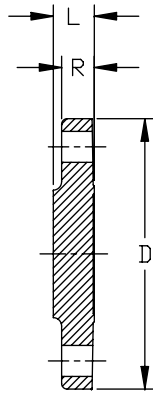
Flange (S)

Size	Part Number	Std. Pack	# of Holes	Bolt Dia.	Bolt Circle Dia.	D	L	N1	R
1/2	851-005	5	4	1/2	2.38	3.50	1.03	0.15	0.44
3/4	851-007	5	4	1/2	2.75	3.88	1.21	0.19	0.51
1	851-010	5	4	1/2	3.13	4.25	1.28	0.15	0.55
1 1/4	851-012	5	4	1/2	3.50	4.63	1.42	0.16	0.63
1 1/2	851-015	5	4	1/2	3.88	5.00	1.54	0.16	0.72
2	851-020	5	4	5/8	4.75	6.00	1.77	0.16	0.75
2 1/2	851-025	5	4	5/8	5.50	7.00	2.01	0.19	0.80
3	851-030	5	4	5/8	6.00	7.50	2.20	0.31	0.98
4	851-040	5	8	5/8	7.50	9.00	2.55	0.22	1.24
6	851-060	1	8	3/4	9.50	11.00	3.86	0.34	1.32
8	851-080	1	8	3/4	11.75	13.50	4.85	0.35	1.37



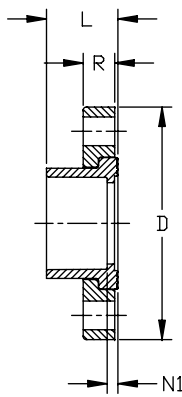
Flange (FPT)

Size	Part Number	Std. Pack	# of Holes	Bolt Dia.	Bolt Circle Dia.	D	L	T	R
1/2	^852-005	5	4	1/2	2.38	3.50	0.94	0.53	0.44
3/4	^852-007	5	4	1/2	2.75	3.88	0.95	0.55	0.51
1	^852-010	5	4	1/2	3.13	4.25	1.13	0.68	0.55
1 1/4	^852-012	5	4	1/2	3.50	4.63	1.19	0.71	0.63
1 1/2	^852-015	5	4	1/2	3.88	5.00	1.21	0.72	0.72
2	^852-020	5	4	5/8	4.75	6.00	1.23	0.76	0.75
2 1/2	^852-025	5	4	5/8	5.50	7.00	1.23	1.14	0.80
3	^852-030	5	4	5/8	6.00	7.50	1.88	1.20	0.98
4	^852-040	5	8	5/8	7.50	9.00	1.99	1.30	1.24



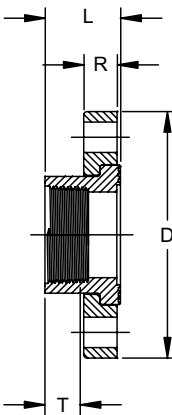
Flange (Blind)

Size	Part Number	Std. Pack	# of Holes	Bolt Dia.	Bolt Circle Dia.	D	L	R
1/2	853-005	1	4	1/2	2.38	3.50	0.50	0.43
3/4	853-007	1	4	1/2	2.75	3.88	0.50	0.44
1	853-010	5	4	1/2	3.13	4.25	0.60	0.57
1 1/4	853-012	5	4	1/2	3.50	4.63	0.63	0.56
1 1/2	853-015	5	4	1/2	3.88	5.00	0.82	0.71
2	853-020	5	4	5/8	4.75	6.00	0.92	0.74
3	853-030	5	4	5/8	6.00	7.50	1.03	0.89
4	853-040	5	8	5/8	7.50	9.00	1.35	1.12
6	853-060	1	8	3/4	9.50	11.00	1.49	1.27
8	853-080	1	8	3/4	11.75	13.50	1.63	1.45



Van Stone Flange (S)

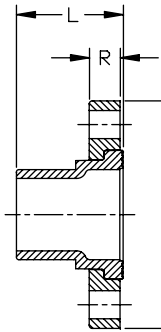
Size	Part Number	Std. Pack	# of Holes	Bolt Dia.	Bolt Circle Dia.	D	L	N1	R
1/2	854-005	5	4	1/2	2.38	3.50	1.03	0.11	0.57
3/4	854-007	5	4	1/2	2.75	3.88	1.15	0.13	0.58
1	854-010	5	4	1/2	3.13	4.25	0.66	0.11	0.66
1 1/4	854-012	5	4	1/2	3.50	4.63	1.45	0.14	0.69
1 1/2	854-015	5	4	1/2	3.88	5.00	1.59	0.15	0.76
2	854-020	5	4	5/8	4.75	6.00	1.76	0.20	0.82
2 1/2	854-025	5	4	5/8	5.50	7.00	2.05	0.22	0.98
3	854-030	5	4	5/8	6.00	7.50	2.25	0.30	1.02
4	854-040	5	8	5/8	7.50	9.00	2.65	0.34	1.11
6	854-060	1	8	3/4	9.50	11.00	3.45	0.35	1.37
8	854-080	1	8	3/4	11.75	13.50	4.50	0.40	1.73



Van Stone Flange (FPT)

Size	Part Number	Std. Pack	# of Holes	Bolt Dia.	Bolt Circle Dia.	D	L	T	R
1/2	^855-005	5	4	1/2	2.38	3.50	1.031	0.53	0.57
3/4	^855-007	5	4	1/2	2.75	3.88	1.162	0.55	0.58
1	^855-010	5	4	1/2	3.13	4.25	1.375	0.68	0.66
1 1/4	^855-012	5	4	1/2	3.50	4.63	1.448	0.71	0.69
1 1/2	^855-015	5	4	1/2	3.88	5.00	1.608	0.72	0.76
2	^855-020	5	4	5/8	4.75	6.00	1.75	0.76	0.82
2 1/2	^855-025	5	4	5/8	5.50	7.00	2.061	1.14	0.98
3	^855-030	5	4	5/8	6.00	7.50	2.215	1.20	1.02
4	^855-040	5	8	5/8	7.50	9.00	2.669	1.30	1.11

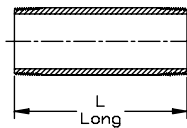
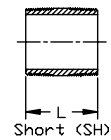
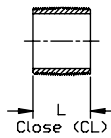
Dimensions are subject to change. Please see online "Price Lists" at <http://www.gfpiping.com> for up-to-date information.



Van Stone Flange (Spg)

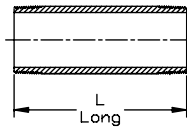
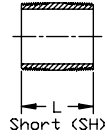
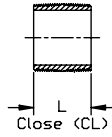
Size	Part Number	Std. Pack	# of Holes	Bolt Dia.	Bolt Circle Dia.	D	L	R
1/2	856-005	5	4	1/2	2.38	3.50	1.65	0.57
3/4	856-007	5	4	1/2	2.75	3.88	1.78	0.58
1	856-010	5	4	1/2	3.13	4.25	2.02	0.66
1 1/4	856-012	5	4	1/2	3.50	4.63	2.20	0.69
1 1/2	856-015	5	4	1/2	3.88	5.00	2.40	0.76
2	856-020	5	4	5/8	4.75	6.00	2.72	0.82
2 1/2	856-025	5	4	5/8	5.50	7.00	3.19	0.98
3	856-030	5	4	5/8	6.00	7.50	3.52	1.02
4	856-040	5	8	5/8	7.50	9.00	4.02	1.11
6	856-060	1	8	3/4	9.50	11.00	5.00	1.37
8	856-080	1	8	3/4	11.75	13.50	6.85	1.73

Nipple (MPT x MPT)



Size	Part Number	Std. Pack	L
1/2 x CL	*861-077	50	1.13
1/2 x 2	*861-079	50	2.00
1/2 x 3	*861-081	50	3.00
1/2 x 4	*861-082	50	4.00
1/2 x 5	*861-083	50	5.00
1/2 x 6	*861-084	50	6.00
1/2 x 8	*861-086	50	8.00
1/2 x 10	*861-087	50	10.00
1/2 x 12	*861-088	50	12.00
3/4 x CL	*861-104	25	1.38
3/4 x SH	*861-105	25	2.00
3/4 x 2	*861-020	25	2.00
3/4 x 3	*861-106	25	3.00
3/4 x 4	*861-107	25	4.00
3/4 x 5	*861-108	25	5.00
3/4 x 6	*861-109	25	6.00
3/4 x 8	*861-110	25	8.00
3/4 x 10	*861-111	25	10.00
3/4 x 12	*861-112	25	12.00
1 x CL	*861-133	25	1.50
1 x SH	*861-134	25	2.00
1 x 3	*861-135	25	3.00
1 x 4	*861-136	25	4.00
1 x 5	*861-137	25	5.00
1 x 6	*861-138	25	6.00
1 x 8	*861-139	25	8.00
1 x 10	*861-140	25	10.00
1 x 12	*861-141	25	12.00
1 1/4 x CL	*861-170	25	1.63
1 1/4 x SH	*861-171	25	2.50
1 1/4 x 3	*861-172	25	3.00
1 1/4 x 4	*861-173	25	4.00
1 1/4 x 5	*861-174	25	5.00
1 1/4 x 6	*861-175	25	6.00
1 1/4 x 8	*861-176	25	8.00
1 1/4 x 10	*861-177	25	10.00
1 1/4 x 12	*861-178	25	12.00
1 1/2 x CL	*861-213	25	1.75
1 1/2 x SH	*861-214	25	2.50

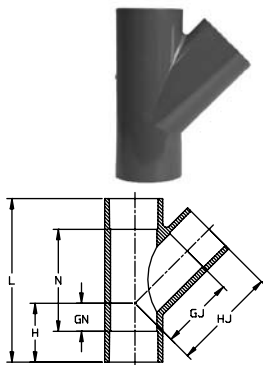
(continued on page 1.16)



Nipple (MPT x MPT) (continued)

Size	Part Number	Std. Pack	L
1½ x 3	*861-215	25	3.00
1½ x 4	*861-216	25	4.00
1½ x 5	*861-217	25	5.00
1½ x 6	*861-218	25	6.00
1½ x 8	*861-219	25	8.00
1½ x 10	*861-220	25	10.00
1½ x 12	*861-221	25	12.00
2 x CL	*861-251	25	2.00
2 x SH	*861-252	25	2.50
2 x 3	*861-253	25	3.00
2 x 4	*861-254	25	4.00
2 x 5	*861-255	25	5.00
2 x 6	*861-256	25	6.00
2 x 8	*861-257	25	8.00
2 x 10	*861-258	25	10.00
2 x 12	*861-259	25	12.00
2½ x CL	*861-291	5	2.50
2½ x SH	*861-292	5	3.00
2½ x 4	*861-295	5	4.00
2½ x 5	*861-296	5	5.00
2½ x 6	*861-297	5	6.00
2½ x 8	*861-298	1	8.00
2½ x 10	*861-299	1	10.00
2½ x 12	*861-300	1	12.00
3 x CL	*861-338	5	2.63
3 x SH	*861-340	5	3.00
3 x 4	*861-341	5	4.00
3 x 5	*861-342	5	5.00
3 x 6	*861-343	5	6.00
3 x 8	*861-344	1	8.00
3 x 10	*861-345	1	10.00
3 x 12	*861-346	1	12.00
4 x CL	*861-422	5	2.88
4 x SH	*861-423	5	4.00
4 x 5	*861-425	5	5.00
4 x 6	*861-426	5	6.00
4 x 8	*861-427	1	8.00
4 x 10	*861-428	1	10.00
4 x 12	*861-429	1	12.00

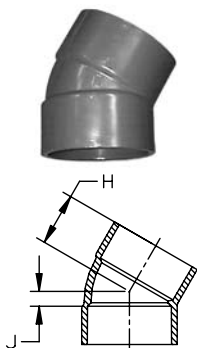
Dimensions are subject to change. Please see online "Price Lists" at <http://www.gfpiping.com> for up-to-date information.



45° Wye (SxSxS)

Size	Part Number	Std. Pack	GJ	GN	H	HJ	L	N	Design
1½	*870-015	20	2.56	0.47	1.47	1.97	5.81	2.59	HS
2	*870-020	10	3.19	0.63	2.13	4.69	6.88	3.19	HS
3	870-030	4	4.85	1.91	3.81	6.75	10.46	6.65	SL
4	870-040	4	6.38	1.84	4.20	8.75	12.96	8.25	SL
6	870-060	1	8.50	1.81	4.86	11.59	16.50	10.39	HS
6 x 4	870-532	1	7.18	1.87	4.91	9.45	16.50	10.39	HS

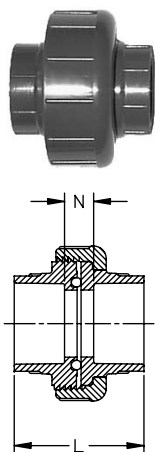
Rated 150psi at 73°F



30° Ell (SxS)

Size	Part Number	Std. Pack	J	H	Design
6	873-060	2	1.17	4.19	HS

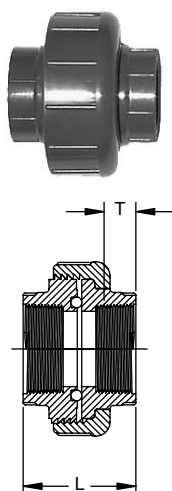
Rated 150psi at 73°F



Union (SxS)

Size	Part Number	Std. Pack	L	N
¼	897-002	25	1.61	0.76
⅜	897-003	25	1.91	0.77
½	897-005	25	2.31	0.95
¾	897-007	5	2.58	1.08
1	897-010	5	2.89	1.25
1¼	897-012	5	3.23	1.32
1½	897-015	5	3.44	1.32
2	897-020	2	3.77	1.51
3	897-030	1	4.74	2.00
4	897-040	1	5.62	2.05

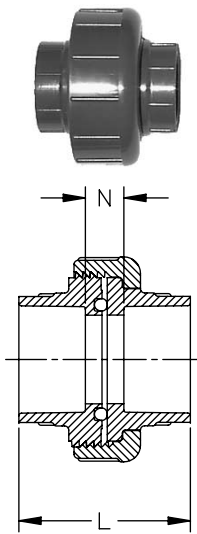
O-Ring Material: EPDM



Union (FPTxFPT)

Size	Part Number	Std. Pack	L	T
¼	^898-002	25	1.63	0.40
⅜	^898-003	25	1.58	0.41
½	^898-005	25	2.03	0.53
¾	^898-007	5	2.11	0.55
1	^898-010	5	2.56	0.68
1¼	^898-012	5	2.79	0.71
1½	^898-015	5	2.72	0.72
2	^898-020	2	2.89	0.76
3	^898-030	1	4.69	1.20
4	^898-040	1	5.62	1.30

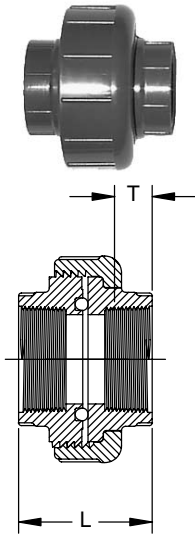
O-Ring Material: EPDM



Union (SxS)

Size	Part Number	Std. Pack	L	N
1/4	857-002	25	1.61	0.76
3/8	857-003	25	1.91	0.77
1/2	857-005	25	2.31	0.95
3/4	857-007	5	2.58	1.08
1	857-010	5	2.89	1.25
1 1/4	857-012	5	3.23	1.32
1 1/2	857-015	5	3.44	1.32
2	857-020	2	3.77	1.51
3	857-030	1	4.74	2.00
4	857-040	1	5.62	2.05

O-Ring Material: FPM



Union (FPTxFPT)

Size	Part Number	Std. Pack	L	T
1/4	^858-002	25	1.63	0.40
3/8	^858-003	25	1.58	0.41
1/2	^858-005	25	2.03	0.53
3/4	^858-007	5	2.11	0.55
1	^858-010	5	2.56	0.68
1 1/4	^858-012	5	2.79	0.71
1 1/2	^858-015	5	2.72	0.72
2	^858-020	2	2.89	0.76
3	^858-030	1	4.69	1.20
4	^858-040	1	5.62	1.30

O-Ring Material: FPM

Dimensions are subject to change. Please see online "Price Lists" at <http://www.gfpiping.com> for up-to-date information.

Schedule 80 PVC Expansion Joint

P/L 34: PVC Pressure Expansion Joint

Flanged, spigot and threaded ends available. Contact factory for pricing and availability.



Expansion Joint 6" Travel (SxS)

Size	Part Number	Std. Pack	A	D	L	N
1/2	*826-005X6	1	3.00	1.85	13.93	12.06
3/4	*826-007X6	1	3.00	2.23	14.40	12.46
1	*826-010X6	1	3.00	2.50	15.02	12.58
1 1/4	*826-012X6	1	3.00	2.50	15.81	13.05
1 1/2	*826-015X6	1	3.00	3.50	16.08	13.13
2	*826-020X6	1	3.00	4.39	18.10	14.88
3	*826-030X6	1	3.00	5.53	19.83	15.79
4	*826-040X6	1	3.00	7.93	27.56	23.01
6	*826-060X6	1	3.00	9.97	27.88	21.75

O-Ring Material: EPDM

Expansion Joint 12" Travel (SxS)

Size	Part Number	Std. Pack	A	D	L	N
1/2	*826-005X12	1	6.00	1.85	22.93	21.06
3/4	*826-007X12	1	6.00	2.23	23.40	21.46
1	*826-010X12	1	6.00	2.50	24.02	21.58
1 1/4	*826-012X12	1	6.00	2.50	24.81	22.05
1 1/2	*826-015X12	1	6.00	3.50	25.08	22.13
2	*826-020X12	1	6.00	4.39	27.10	23.88
3	*826-030X12	1	6.00	5.53	28.83	24.79
4	*826-040X12	1	6.00	7.93	36.56	32.01
6	*826-060X12	1	6.00	9.97	36.88	30.75

O-Ring Material: EPDM

Expansion Joint 6" Travel (SxS)

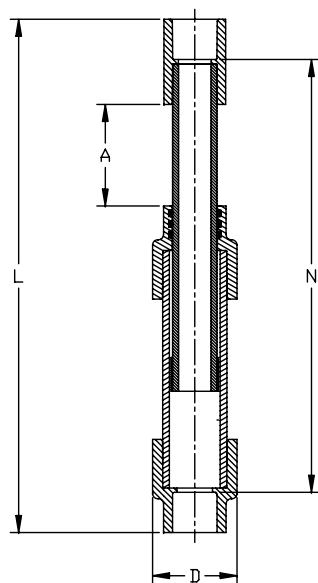
Size	Part Number	Std. Pack	A	D	L	N
1/2	*836-005X6	1	3.00	1.85	13.93	12.06
3/4	*836-007X6	1	3.00	2.23	14.40	12.46
1	*836-010X6	1	3.00	2.50	15.02	12.58
1 1/4	*836-012X6	1	3.00	2.50	15.81	13.05
1 1/2	*836-015X6	1	3.00	3.50	16.08	13.13
2	*836-020X6	1	3.00	4.39	18.10	14.88
3	*836-030X6	1	3.00	5.53	19.83	15.79
4	*836-040X6	1	3.00	7.93	27.56	23.01
6	*836-060X6	1	3.00	9.97	27.88	21.75

O-Ring Material: FPM

Expansion Joint 12" Travel (SxS)

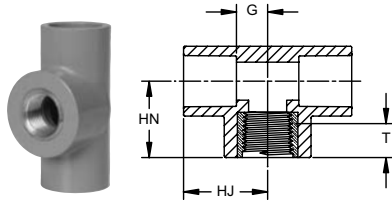
Size	Part Number	Std. Pack	A	D	L	N
1/2	*836-005X12	1	6.00	1.85	22.93	21.06
3/4	*836-007X12	1	6.00	2.23	23.40	21.46
1	*836-010X12	1	6.00	2.50	24.02	21.58
1 1/4	*836-012X12	1	6.00	2.50	24.81	22.05
1 1/2	*836-015X12	1	6.00	3.50	25.08	22.13
2	*836-020X12	1	6.00	4.39	27.10	23.88
3	*836-030X12	1	6.00	5.53	28.83	24.79
4	*836-040X12	1	6.00	7.93	36.56	32.01
6	*836-060X12	1	6.00	9.97	36.88	30.75

O-Ring Material: FPM



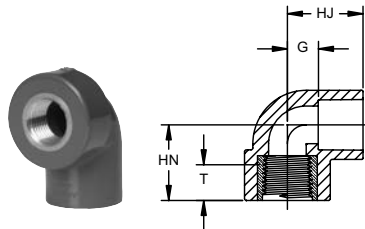
Schedule 80 PVC Brass Insert Fittings

P/L 33: PVC Pressure Brass Insert Fittings



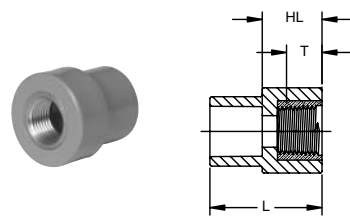
Tee (SxSxFPT Brass)

Size	Part Number	Std. Pack	HJ	HN	G	T
1/2	*8121200806	20	1.44	1.09	0.53	0.53
3/4 x 1/2	*8121200837	20	1.63	1.19	0.59	0.53



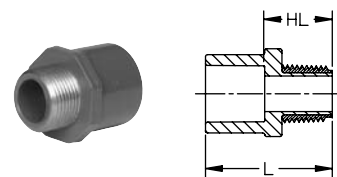
90° Ell (S x FPT Brass)

Size	Part Number	Std. Pack	HJ	HN	G	T
1/2	*8121100806	20	1.44	1.09	0.53	0.53
3/4 x 1/2	*8121100837	20	1.63	1.19	0.59	0.53



Coupling (SxFPT Brass)

Size	Part Number	Std. Pack	HL	L	T
1/2	*8121910806	20	0.93	1.66	0.53
3/4 x 1/2	*8121910837	20	0.86	1.78	0.53



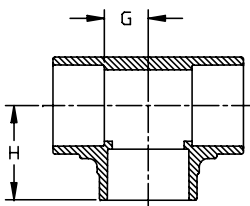
Male Adapter (SxMPT Brass)

Size	Part Number	Std. Pack	HL	L
1/2	*8121900806	25	0.92	1.65
3/4	*8121900807	15	0.93	1.85
1	*8121900808	15	1.02	2.05

Dimensions are subject to change. Please see online "Price Lists" at <http://www.gfpiping.com> for up-to-date information.

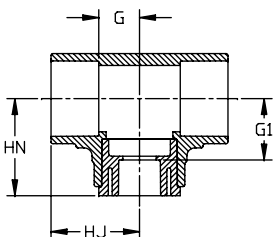
Schedule 80 PVC Large Diameter Fittings

P/L 02: PVC Pressure LD Fittings-Molded



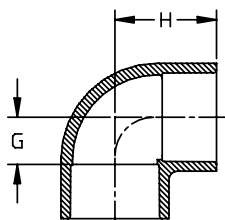
Tee (SxSxS)

Size	Part Number	Std. Pack	H	G
10	801-100	1	11.25	5.75
12	801-120	1	13.39	6.89



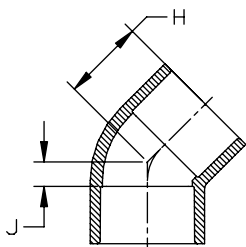
Reducing Tee (SxSxS)

Size	Part Number	Std. Pack	HJ	HN	G	G1
10 x 8	*801-628FB	1	11.25	11.41	5.75	7.32
12 x 10	*801-670FB	1	13.39	13.61	6.89	8.52



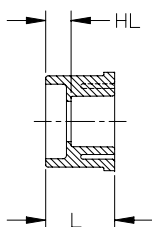
90° Ell (SxS)

Size	Part Number	Std. Pack	H	G
10	806-100	1	11.25	5.75
12	806-120	1	13.39	6.89



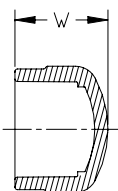
45° Ell (SxS)

Size	Part Number	Std. Pack	H	J
10	817-100	1	8.11	2.61
12	817-120	1	9.58	3.08



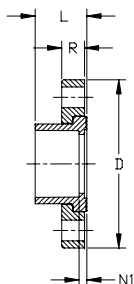
Flush Style Reducer Bushing (SpgxS)

Size	Part Number	Std. Pack	HL	L
10 x 8	837-628	1	1.57	5.66
12 x 10	837-670	1	1.63	6.72



Cap (S)

Size	Part Number	Std. Pack	W
10	847-100	1	7.88
12	847-120	1	9.38

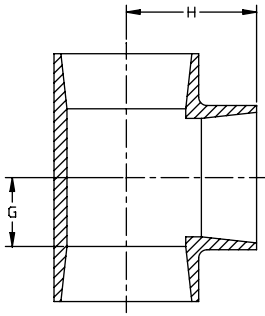


Van Stone Flange (S)

Size	Part Number	Std. Pack	# of Holes	Bolt Dia.	Bolt Circle Dia.	D	L	N1	R
10	854-100	1	12	7/8	14.25	16.00	5.63	0.50	1.73
12	854-120	1	12	7/8	17.00	19.00	6.69	0.56	1.73

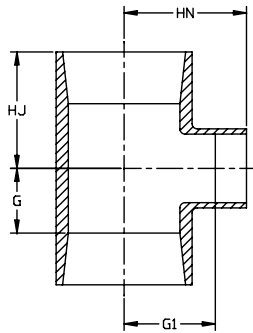
Schedule 80 PVC Large Diameter Fittings

P/L 05: PVC Pressure LD Fittings-Fabricated



Tee (SxSxS)

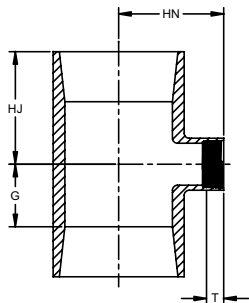
Size	Part Number	Std. Pack	H	G
14	*801-140H	1	25.00	11.00
16	*801-160H	1	28.25	12.25



Reducing Tee (SxSxS)

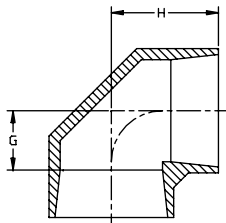
Size	Part Number	Std. Pack	HJ	HN	G	G1
10 x 2	*801-619H	1	9.69	14.50	4.69	13.31
10 x 3	*801-621H	1	10.25	15.00	5.25	13.25
10 x 4	*801-623H	1	10.75	15.50	5.75	13.25
10 x 6	*801-626H	1	11.81	16.50	6.81	13.19
12 x 2	*801-659H	1	10.69	16.50	4.69	15.31
12 x 3	*801-661H	1	11.25	17.00	5.25	15.25
12 x 4	*801-663H	1	11.75	17.50	5.75	15.25
12 x 6	*801-666H	1	12.81	18.50	6.81	15.19
12 x 8	*801-668H	1	13.81	19.75	7.81	15.44
14 x 2	*801-692H	1	12.19	17.75	5.19	16.56
14 x 3	*801-694H	1	12.75	18.25	5.75	16.50
14 x 4	*801-696H	1	13.25	18.75	6.25	16.50
14 x 6	*801-698H	1	14.31	19.75	7.31	16.44
14 x 8	*801-700H	1	15.31	21.00	8.31	16.69
14 x 10	*801-702H	1	16.38	22.50	9.38	17.13
14 x 12	*801-704H	1	17.38	23.50	10.38	17.13
16 x 2	*801-726H	1	13.44	19.75	5.44	18.56
16 x 3	*801-728H	1	14.00	20.25	6.00	18.50
16 x 4	*801-730H	1	14.50	20.75	6.50	18.50
16 x 6	*801-732H	1	15.56	21.75	7.56	18.44
16 x 8	*801-734H	1	16.56	23.00	8.56	18.69
16 x 10	*801-736H	1	17.63	24.50	9.63	19.13
16 x 12	*801-738H	1	18.63	25.50	10.63	19.13
16 x 14	*801-740H	1	19.25	27.00	11.25	20.00

Dimensions are subject to change. Please see online "Price Lists" at <http://www.gfpiping.com> for up-to-date information.



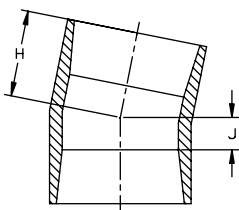
Reducing Tee (SxSxFPT)

Size	Part Number	Std. Pack	HJ	HN	G	T
10 x 2	*802-619H	1	9.69	7.64	4.69	0.76
10 x 3	*802-621H	1	10.25	8.08	5.25	1.20
10 x 4	*802-623H	1	10.75	8.18	5.75	1.30
12 x 2	*802-659H	1	10.69	8.64	4.69	0.76
12 x 3	*802-661H	1	11.25	9.08	5.25	1.20
12 x 4	*802-663H	1	11.75	9.18	5.75	1.30



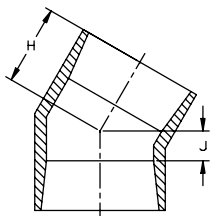
90° Ell (SxS)

Size	Part Number	Std. Pack	H	G
14	*806-140H	1	23.75	16.75
16	*806-160H	1	27.00	19.00



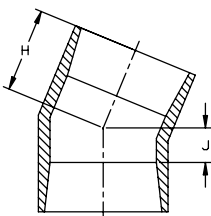
11¼° Ell (SxS)

Size	Part Number	Std. Pack	H	J
10	*811-100H	1	10.81	5.81
12	*811-120H	1	11.88	5.88
14	*811-140H	1	13.50	6.50
16	*811-160H	1	13.63	5.63



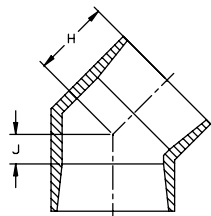
30° Ell (SxS)

Size	Part Number	Std. Pack	H	J
10	*815-100H	1	12.25	7.25
12	*815-120H	1	13.50	7.50
14	*815-140H	1	15.25	8.25
16	*815-160H	1	15.00	7.00



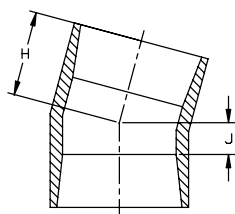
22½° Ell (SxS)

Size	Part Number	Std. Pack	H	J
10	*816-100H	1	11.63	6.63
12	*816-120H	1	12.88	6.88
14	*816-140H	1	14.50	7.50
16	*816-160H	1	14.50	6.50



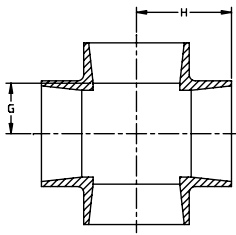
45° Ell (SxS)

Size	Part Number	Std. Pack	H	J
14	*817-140H	1	16.50	9.50
16	*817-160H	1	18.00	10.00



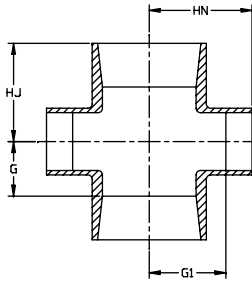
15° Ell (SxS)

Size	Part Number	Std. Pack	H	J
10	*818-100H	1	11.38	6.38
12	*818-120H	1	12.38	6.38
14	*818-140H	1	14.00	7.00
16	*818-160H	1	13.63	5.63



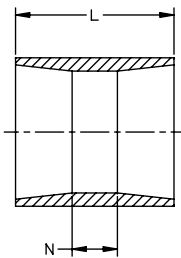
Cross (SxSxS)

Size	Part Number	Std. Pack	H	J
10	*820-100H	1	19.25	8.88
12	*820-120H	1	22.25	9.88
14	*820-140H	1	25.00	11.00
16	*820-160H	1	28.25	12.25



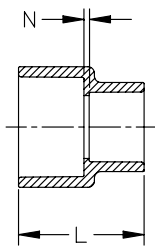
Reducing Cross (SxSxS)

Size	Part Number	Std. Pack	HJ	HN	G	G1
10 x 2	*820-619H	1	9.69	14.50	4.69	13.31
10 x 3	*820-621H	1	10.25	15.00	5.25	13.25
10 x 4	*820-623H	1	10.75	15.50	5.75	13.25
10 x 6	*820-626H	1	11.81	16.50	6.81	13.19
10 x 8	*820-628H	1	12.81	17.75	7.81	13.44
12 x 2	*820-659H	1	10.69	16.50	4.69	15.31
12 x 3	*820-661H	1	11.25	17.00	5.25	15.25
12 x 4	*820-663H	1	11.75	17.50	5.75	15.25
12 x 6	*820-666H	1	12.81	18.50	6.81	15.19
12 x 8	*820-668H	1	13.81	19.75	7.81	15.44
12 x 10	*820-670H	1	14.88	21.25	8.88	15.88
14 x 2	*820-692H	1	12.19	17.75	5.19	16.56
14 x 3	*820-694H	1	12.75	18.25	5.75	16.50
14 x 4	*820-696H	1	13.25	18.75	6.25	16.50
14 x 6	*820-698H	1	14.31	19.75	7.31	16.44
14 x 8	*820-700H	1	15.31	21.00	8.31	16.69
14 x 10	*820-702H	1	16.38	22.50	9.38	17.13
14 x 12	*820-704H	1	17.38	23.50	10.38	17.13
16 x 2	*820-726H	1	13.44	19.75	5.44	18.56
16 x 3	*820-728H	1	14.00	20.25	6.00	18.50
16 x 4	*820-730H	1	14.50	20.75	6.50	18.50
16 x 6	*820-732H	1	15.56	21.75	7.56	18.44
16 x 8	*820-734H	1	16.56	23.00	8.56	18.69
16 x 10	*820-736H	1	17.63	24.50	9.63	19.13
16 x 12	*820-738H	1	18.63	25.50	10.63	19.13
16 x 14	*820-740H	1	19.25	27.00	11.25	20.00



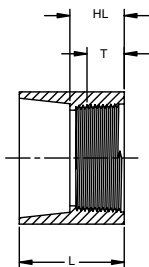
Coupling (SxS)

Size	Part Number	Std. Pack	L	N
10	*829-100H	1	13.00	3.00
12	*829-120H	1	15.00	3.00
14	*829-140H	1	17.63	3.63
16	*829-160H	1	19.88	3.88



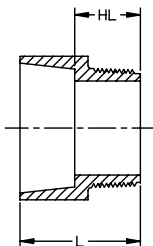
Reducing Coupling (SxS)

Size	Part Number	Std. Pack	L	N
10 x 4	*829-623H	1	16.25	9.25
10 x 6	*829-626H	1	15.75	7.75
10 x 8	*829-628H	1	14.00	5.00
12 x 8	*829-668H	1	17.00	7.00
12 x 10	*829-670H	1	17.00	6.00
14 x 10	*829-702H	1	19.00	7.00
14 x 12	*829-704H	1	17.00	4.00
16 x 12	*829-738H	1	22.00	8.00
16 x 14	*829-740H	1	20.00	5.00



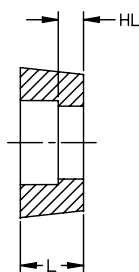
Female Adapter (SxFPT)

Size	Part Number	Std. Pack	HL	L	T
10	*835-100H	1	5.00	10.00	1.93
12	*835-120H	1	5.00	11.00	2.13
14	*835-140H	1	9.00	14.00	2.25



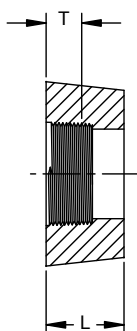
Male Adapter (SxMPT)

Size	Part Number	Std. Pack	HL	L
10	*836-100H	1	4.50	9.50
12	*836-120H	1	5.50	11.50
14	*836-140H	1	6.00	13.00



Flush Style Reducer Bushing (SpgxS)

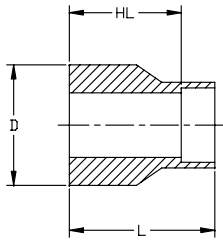
Size	Part Number	Std. Pack	HL	L
10 x 4	*837-623H	1	3.00	5.00
10 x 6	*837-626H	1	2.00	5.00
12 x 6	*837-666H	1	3.00	5.00
12 x 8	*837-668H	1	2.00	6.00
14 x 4	*837-696H	1	5.00	7.00
14 x 6	*837-698H	1	4.00	7.00
14 x 8	*837-700H	1	3.00	7.00
14 x 10	*837-702H	1	2.00	7.00
14 x 12	*837-704H	1	1.00	7.00
16 x 4	*837-730H	1	6.00	8.00
16 x 6	*837-732H	1	5.00	8.00
16 x 8	*837-734H	1	4.00	8.00
16 x 10	*837-736H	1	3.00	8.00
16 x 12	*837-738H	1	2.00	8.00
16 x 14	*837-740H	1	1.00	8.00



Flush Style Reducer Bushing (SpgxFPT)

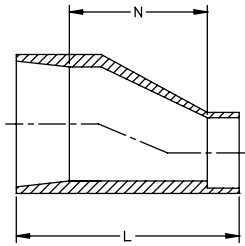
Size	Part Number	Std. Pack	L	T
10 x 4	*838-623H	1	5.00	1.30
10 x 6	*838-626H	1	5.00	1.51
10 x 8	*838-628H	1	5.00	1.71
12 x 4	*838-663H	1	6.00	1.30
12 x 6	*838-666H	1	6.00	1.51
12 x 8	*838-668H	1	6.00	1.71
12 x 10	*838-670H	1	6.00	1.93

Dimensions are subject to change. Please see online "Price Lists" at <http://www.gfpiping.com> for up-to-date information.



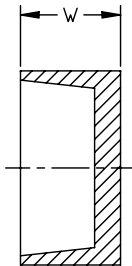
Extended Style Reducer Bushing (SpgxS)

Size	Part Number	Std. Pack	D	HL	L
10 x 6	*840-626H	1	10.75	9.00	12.00
10 x 8	*840-628H	1	10.75	6.50	10.50
12 x 6	*840-666H	1	12.75	12.75	15.75
12 x 8	*840-668H	1	12.75	10.00	15.00
12 x 10	*840-670H	1	12.75	7.25	12.25
14 x 8	*840-700H	1	14.00	11.00	17.00
14 x 10	*840-702H	1	14.00	11.00	16.00
14 x 12	*840-704H	1	14.00	7.50	15.50
16 x 10	*840-736H	1	16.00	13.00	18.00
16 x 12	*840-738H	1	16.00	12.00	18.00
16 x 14	*840-740H	1	16.00	10.00	17.00



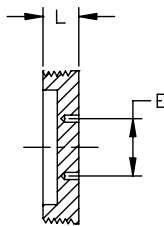
Eccentric Reducer (SxS)

Size	Part Number	Std. Pack	L	N
10 x 4	*841-623H	1	26.25	18.50
10 x 6	*841-626H	1	17.75	3.75
10 x 8	*841-628H	1	18.00	10.00
12 x 4	*841-663H	1	24.00	15.75
12 x 6	*841-666H	1	24.00	9.25
12 x 8	*841-668H	1	24.25	8.00
12 x 10	*841-670H	1	21.00	3.25



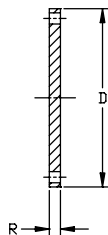
Cap (S)

Size	Part Number	Std. Pack	W
14	*847-140H	1	8.50
16	*847-160H	1	9.50



Plug (MPT)

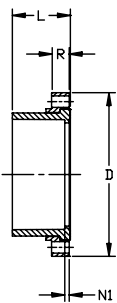
Size	Part Number	Std. Pack	E	L
6	*850-060H	1	4.00	1.00
8	*850-080H	1	4.00	1.00
10	*850-100H	1	4.00	1.00
12	*850-120H	1	4.00	1.00



Flange (Blind)

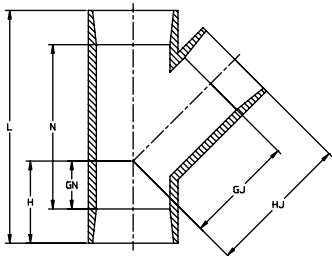
Size	Part Number	Std. Pack	# of Holes	Bolt Dia.	Bolt Corcle Dia.	D	R
10	*853-100H	1	12	7/8	14.25	16.00	1.00
12	*853-120H	1	12	7/8	17.00	19.00	1.00
14	*853-140H	1	12	7/8	18.75	21.00	1.00
16	*853-160H	1	16	1	21.25	23.50	1.00

Dimensions are subject to change. Please see online "Price Lists" at <http://www.gfpiping.com> for up-to-date information.



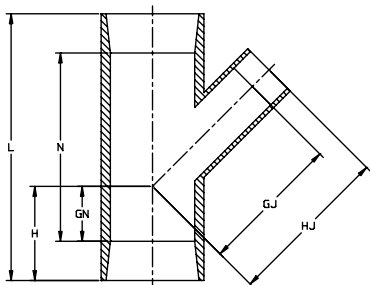
Van Stone Flange (S)

Size	Part Number	Std. Pack	# of Holes	Bolt Dia.	Bolt Circle Dia.	D	L	N1	R
14	*854-140H	1	12	7/8	18.75	21.00	7.75	0.50	1.38
16	*854-160H	1	16	1	21.25	23.50	10.75	0.50	1.50



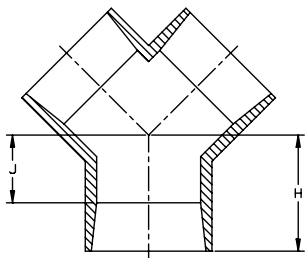
45° Wye (SxSxS)

Size	Part Number	Std. Pack	GJ	GN	H	HJ	L	N
10	*875-100H	1	16.98	5.73	10.73	21.98	33.21	23.21
12	*875-120H	1	19.39	6.14	12.14	25.39	38.03	26.03
14	*875-140H	1	21.40	5.40	12.40	28.40	42.80	28.80
16	*875-160H	1	24.06	4.82	12.82	32.06	48.13	32.13



Reducing 45° Wye (SxSxS)

Size	Part Number	Std. Pack	GJ	GN	H	HJ	L	N
10 x 2	*875-619H	1	12.04	-0.20	4.80	13.04	21.36	11.36
10 x 2½	*875-620H	1	12.29	0.16	5.16	13.54	22.07	12.07
10 x 3	*875-621H	1	12.80	0.60	5.60	14.10	22.95	12.95
10 x 4	*875-623H	1	13.10	1.31	6.31	15.10	24.36	14.36
10 x 6	*875-626H	1	14.16	2.81	7.81	17.16	27.37	17.37
10 x 8	*875-628H	1	15.41	4.22	9.22	19.41	30.2	20.2
12 x 2	*875-659H	1	13.45	-1.20	4.80	14.45	23.36	11.36
12 x 3	*875-661H	1	14.01	-0.40	5.60	15.51	24.95	12.95
12 x 4	*875-663H	1	14.51	0.31	6.31	16.51	26.36	14.36
12 x 6	*875-666H	1	15.58	1.81	7.81	18.58	29.37	17.37
12 x 8	*875-668H	1	16.83	3.22	9.22	20.83	32.2	20.2
12 x 10	*875-670H	1	18.39	4.73	10.73	23.39	35.21	23.21
14 x 4	*875-696H	1	15.40	-1.32	5.68	17.40	29.36	15.36
14 x 6	*875-698H	1	16.46	0.19	7.19	19.46	32.37	18.37
14 x 8	*875-700H	1	17.71	1.60	8.60	21.71	35.2	21.2
14 x 10	*875-702H	1	19.27	3.10	10.10	24.27	38.21	24.21
14 x 12	*875-704H	1	20.27	4.52	11.52	26.27	41.03	27.03
16 x 4	*875-730H	1	16.81	-3.32	4.68	18.81	31.86	15.86
16 x 6	*875-732H	1	17.87	-1.81	6.19	20.87	34.87	18.87
16 x 8	*875-734H	1	19.12	-0.40	7.60	23.12	37.7	21.7
16 x 10	*875-736H	1	20.69	1.10	9.10	25.69	40.71	24.71
16 x 12	*875-738H	1	21.69	2.52	10.52	27.69	43.53	27.53
16 x 14	*875-740H	1	22.81	3.40	11.40	29.81	45.3	29.3



True Wye (SxSxS)

Size	Part Number	Std. Pack	H	J
10	*876-100H	1	4.94	9.94
12	*876-120H	1	5.50	11.50
14	*876-140H	1	6.13	13.13
16	*876-160H	1	6.50	14.50

Dimensions are subject to change. Please see online "Price Lists" at <http://www.gfpiping.com> for up-to-date information.

Manual Ball Valves

P/L 37: Type 546 True Union Ball Valve-PVC



Solvent Cement Socket/Threaded FPT

Size	Part Number/ EPDM Seals	Part Number/ FPM Seals
3/8	161 546 341	161 546 351
1/2	161 546 342	161 546 352
3/4	161 546 343	161 546 353
1	161 546 344	161 546 354
1 1/4	161 546 345	161 546 355
1 1/2	161 546 346	161 546 356
2	161 546 347	161 546 357

ANSI Flanged



Size	Part Number/ EPDM Seals	Part Number/ FPM Seals
1/2	161 546 582	161 546 592
3/4	161 546 583	161 546 593
1	161 546 584	161 546 594
1 1/4	161 546 585	161 546 595
1 1/2	161 546 586	161 546 596
2	161 546 587	161 546 597

P/L 13: Type 375 True Union Ball Valve-PVC



Solvent Cement Socket/Threaded NPT

Size	Part Number/ EPDM Seals	Part Number/ FPM Seals
3/8	161 375 001	161 375 016
1/2	161 375 002	161 375 017
3/4	161 375 003	161 375 018
1	161 375 004	161 375 019
1 1/4	161 375 005	161 375 020
1 1/2	161 375 006	161 375 021
2	161 375 007	161 375 022
2 1/2 ¹	161 375 008	161 375 023
3 ¹	161 375 009	161 375 024
4 ¹	161 375 010	161 375 025
6 ¹	*161 375 011	*161 375 026

[6" valve venturied from 4"]

¹ = *2 1/2" - 6" include socket only

Flanged



Size	Part Number/ EPDM Seals	Part Number/ FPM Seals
1/2	161 375 062	161 375 077
3/4	161 375 063	161 375 078
1	161 375 064	161 375 079
1 1/4	161 375 065	161 375 080
1 1/2	161 375 066	161 375 081
2	161 375 067	161 375 082
2 1/2	161 375 068	161 375 083
3	161 375 069	161 375 084
4	161 375 070	161 375 085
6	161 375 071	161 375 086

[6" valve venturied from 4"]

Manual Ball Valves

P/L 71: Type 374 True Union Ball Valve-PVC — The H₂O Valve™



Solvent Cement Socket/Threaded FPT

Size	Part Number/ EPDM Seals	Std. Pack
3/8	161 374 001	12
1/2	161 374 002	12
3/4	161 374 003	12
1	161 374 004	12
1 1/4	161 374 005	6
1 1/2	161 374 006	6
2	161 374 007	6
2 1/2 ¹	161 374 008	1
3 ¹	161 374 009	1
4 ¹	161 374 010	1

^ = 40% Restock Charge

* = Non-Cancelable / Non-Returnable

¹ = 2 1/2" through 4" sold with socket ends only.

Manual Ball Valve Type 374, 375 and 546 Comparison

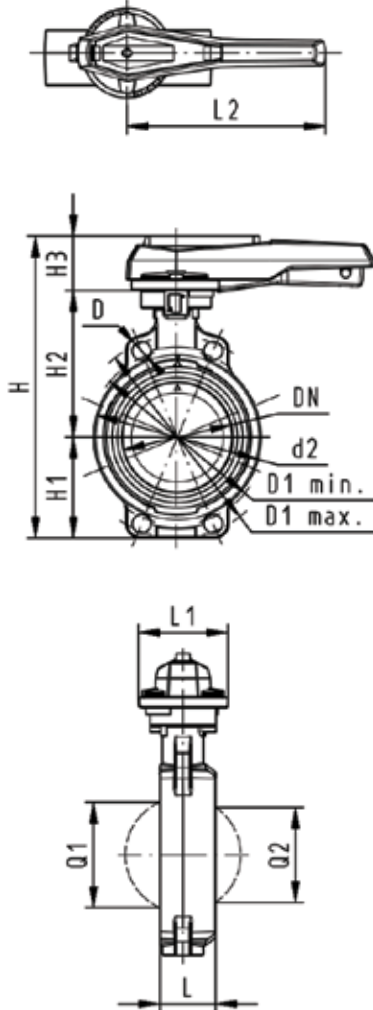
	TYPE 374, The H ₂ O Valve	TYPE 375	TYPE 546
Available Materials	PVC	PVC, CPVC, PROGEF® Natural (natural polypropylene)	PVC, CPVC, PP, SYGEF® (PVDF)
Size Range	3/8" - 4"	3/8" to 6"	3/8" - 2" (2 1/2" through 4" available in 2006)
Seal/Seat Materials	EPDM seals PTFE/PE blended seats	EPDM or FPM seals PTFE seats	EPDM or FPM or FFPM seals PTFE seats
Pressure Rating (at 70 F +/-)	225 psi (PVC socket) 150 psi (PVC threaded)	225 psi (1/2" - 2") 150 psi (2 1/2" + and all PPN) 150 psi (all threaded)	232 psi (PVC, CPVC, PVDF socket) 150 psi (PP socket) 150 psi (all threaded)
Maximum Temperature Rating (pressure derating applies)	140 F (PVC)	140 F (PVC), 176 F (CPVC and PROGEF® Natural)	140 F (PVC), 176 F (CPVC and PP), 284 F (SYGEF®)
End Connections	Solvent cement socket, threaded	Solvent cement socket, threaded, flanged, socket fusion	Solvent cement socket and spigot, threaded, flanged, butt and socket fusion
Approvals/Certifications	NSF 61 - drinking water	NA	NSF 14: potable water and applicable ASTM standards NSF 61-drinking water
Available Actuators	NA	Electric for simple on/off service (Available in 2006)	Pneumatic, electric
Accessories	NA	NA	Locking handle; stem extensions; position sensing
Design Features	<ul style="list-style-type: none"> Designed for water and waste water service Double o-ring stem Short lay length 	<ul style="list-style-type: none"> Machined ball Shortest true-union, industrial valve body Double o-ring stem 	<ul style="list-style-type: none"> Multi-function module Base mounting inserts Buttress threads Left-handed ball seat threads Machined ball Double o-ring stem
Available Options	NA	Vent hole	Mounting inserts, silicone free service, vent hole
Warranty	1 year	1 year	Limited lifetime warranty
List Price of a 1" PVC/EPDM Valve	\$30.50	\$40.20	\$53.50

Manual Butterfly Valves

P/L 73: Type 567 Butterfly Valve-PVC

Hand Lever with Ratchet Settings

- Connecting dimension: ISO 7005 PN 10, EN 1092 PN 10, DIN 2501 PN 10, ANSI B 16.5 Class 150, BS 1560: 1958, JIS B 2220
- Overall length according to EN 558-1, ISO 5752



Inch	PSI	Cv	EPDM	FPM
2	150	103	161 567 002	161 567 022
2½	150	154	161 567 003	161 567 023
3	150	210	161 567 004	161 567 024
4	150	455	161 567 005	161 567 025
5	150	805	161 567 006	161 567 026
6	150	1162	161 567 007	161 567 027
8	150	2772	161 567 008	161 567 028

Inch	D	D1 min	D1 max	d2	H	H1	H2	H3
2	0.75	4.72	4.92	4.09	10.39	3.03	5.28	2.13
2½	0.75	5.5	5.71	4.53	10.91	3.27	5.51	2.13
3	0.75	5.91	6.3	5.16	11.38	3.5	5.75	2.13
4	0.75	6.89	7.5	6.34	12.8	4.09	6.57	2.17
5	0.91	8.27	8.5	7.36	13.86	4.61	7.13	2.17
6	0.94	9.5	9.5	8.46	14.69	5.12	7.44	2.17
8	0.91	11.42	11.61	10.51	17.13	6.22	8.27	2.64

Inch	L	L1	L2	Q1	Q2
2	1.77	4.17	8.07	1.57	-
2½	1.81	4.17	8.07	2.13	1.38
3	1.93	4.17	8.07	2.64	1.97
4	2.2	4.17	10.04	3.46	2.91
5	2.52	4.17	10.04	4.45	3.82
6	2.83	4.17	10.04	5.47	4.84
8	2.87	5.51	16.06	7.01	6.65

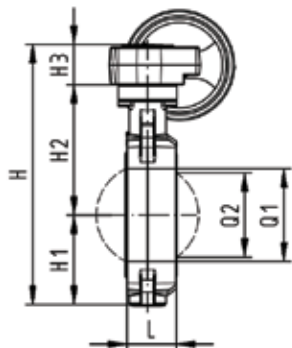
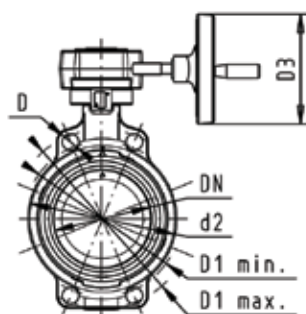
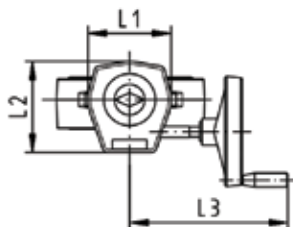
Dimensions are subject to change. Please see online "Price Lists" at <http://www.gfpiping.com> for up-to-date information.

Manual Butterfly Valves

P/L 73: Type 567 Butterfly Valve-PVC

Reduction Gear with Handwheel

- Connecting dimension: ISO 7005 PN 10, EN 1092 PN 10, DIN 2501 PN 10, ANSI B 16.5 Class 150, BS 1560: 1958, JIS B 2220
- Overall length according to EN 558-1, ISO 5752



Inch	PSI	Cv	EPDM	FPM
2	150	103	^161 567 042	^161 567 062
2½	150	154	^161 567 043	^161 567 063
3	150	210	^161 567 044	^161 567 064
4	150	455	^161 567 045	^161 567 065
5	150	805	^161 567 046	^161 567 066
6	150	1162	^161 567 047	^161 567 067
8	150	2772	^161 567 048	^161 567 068

Inch	D	D1 min.	D1 max.	d2	D3	H	H1
2	0.75	4.72	4.92	4.09	6.3	10.94	3.03
2½	0.75	5.5	5.71	4.53	6.3	11.46	3.27
3	0.75	5.91	6.3	5.16	6.3	11.93	3.5
4	0.75	6.89	7.5	6.34	6.3	13.35	4.09
5	0.91	8.27	8.5	7.36	6.3	14.37	4.61
6	0.94	9.5	9.5	8.46	6.3	15.23	5.12
8	0.91	11.42	11.61	10.51	6.3	17.17	6.22

Inch	H2	H3	L	L1	L2	L3	Q1	Q2
2	5.28	2.68	1.77	4.72	5.2	9.29	1.57	-
2½	5.51	2.68	1.81	4.72	5.2	9.29	2.13	1.38
3	5.75	2.68	1.93	4.72	5.2	9.29	2.64	1.97
4	6.57	2.68	2.2	4.72	5.2	9.29	3.46	2.91
5	7.13	2.68	2.52	4.72	5.2	9.29	4.45	3.82
6	7.44	2.68	2.83	4.72	5.2	9.29	5.47	4.84
8	8.27	2.68	2.87	4.72	5.2	9.29	7.01	6.65

Dimensions are subject to change. Please see online "Price Lists" at <http://www.gfpiping.com> for up-to-date information.

GF Piping Systems

PVC Pressure Piping System Specification Submittal Data Sheet Schedule 80 Pipe and Fittings

Pipe:

Pipe will be manufactured to the dimensions and tolerances of ASTM D1785. Belled end pipe bells shall be manufactured to the dimensions and tolerances of ASTM D2672. The PVC material shall be Type I, Grade I with a cell classification of 12454-B and conform to ASTM D1784. The pipe will conform to NSF 14 & 61, CSA 8137.3, and UPC® standards

- PVC Sch.80 Type I, Group I Plain End Pipe - 20 ft. Lengths
- PVC Sch.80 Type I, Group I Belled End Pipe - 20 ft. Lengths

Fittings

Socket type molded fittings will be manufactured to the dimensions and tolerances of ASTM D2467. Threaded type (NPT) molded fittings will be manufactured to the dimensions and tolerances of ASTM D2464 and meet the requirements of ANSI/ASME B 1.20.1. Flanges shall meet the O.D. and bolt hole patterns as specified in ANSI/ASME B 16.5. The PVC material shall be Type I, Grade I with a cell classification of 12454-B and conform to ASTM D1784. The fittings will conform to NSF 14 & 61, and UPC® standards.

- PVC Sch.80 Type I, Grade I Socket Type
- PVC Sch.80 Type I, Grade I Threaded Type
- PVC Sch.80 Type I, Grade I Flange Type

Job Name: _____

Job Location: _____

Engineer: _____

Contractor: _____

Representative: _____

HS = High Strength Design
SL = Slim Line Design



GEORG FISCHER
PIPING SYSTEMS

Dimensions are subject to change. Please see online "Price Lists" at <http://www.gfpiping.com> for up-to-date information.