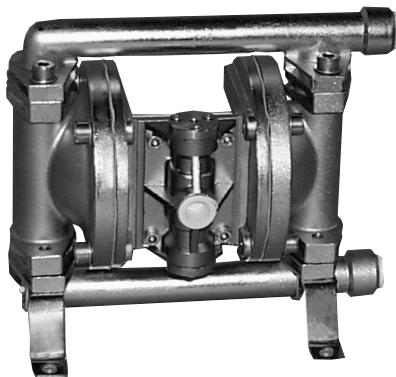


**WARREN  
RUPP®**

Quality System  
ISO9001 Certified

Environmental  
Management System  
ISO14001 Certified

**IDEX**  
IDEX CORPORATION



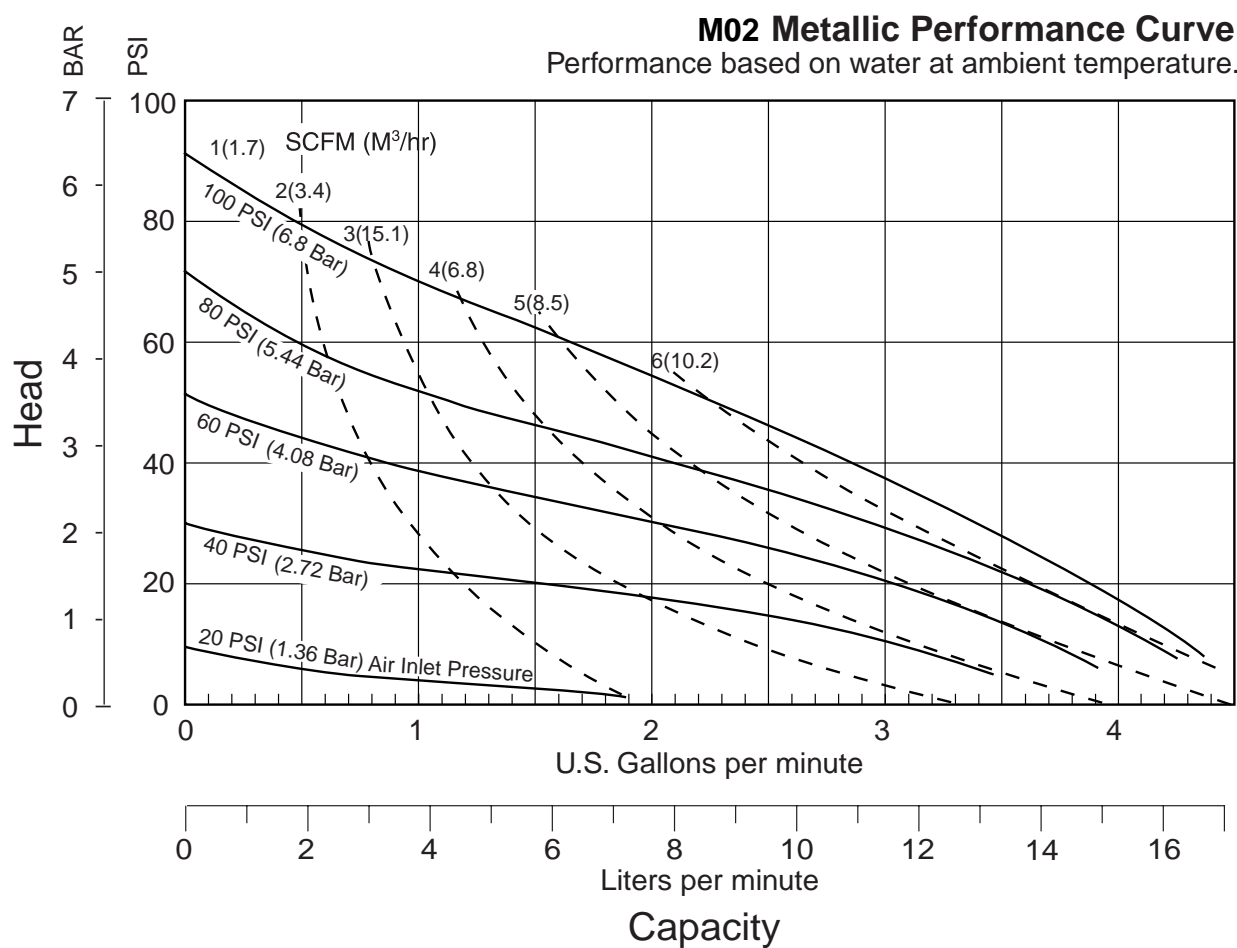
**MARATHON®**

## M02 Metallic Design Level 1 Ball Valve

**Air-Powered  
Double-Diaphragm Pump**

ENGINEERING, PERFORMANCE  
& CONSTRUCTION DATA

INTAKE/DISCHARGE PIPE SIZE 1/4" NPT (Internal)	CAPACITY 0 to 4.4 gallons per minute (0 to 16.6 liters per minute)	AIR VALVE Non-stall design	SOLIDS-HANDLING Up to .079 in. (2 mm)	HEADS UP TO 125 psi or 288 ft. of water (8.6 Kg/cm <sup>2</sup> or 86 meters)	DISPLACEMENT/STROKE .003 Gallon / .01 liter
---	--	----------------------------------	--	---	--



**Marathon® pumps are designed to be powered only by compressed air.**

# M02 Metallic • Design Level I • Ball Valve

MODEL	Pump Brand	Pump Size	Check Valve Type	Design Level	Wetted Material	Diaphragm/Check Valve Materials	Check Valve Seat	Non-Wetted Material Options	Porting Options	Pump Style	Pump Options	Kit Options	Shipping Weight lbs. (kg)
M02B1S5SSNS000.	M	02	B	1	S	5	S	S	N	S	0	00.	8.8 (4)
M02B1S6SSNS000.	M	02	B	1	S	6	S	S	N	S	0	00.	8.8 (4)
M02B1SYSSNS000.	M	02	B	1	S	Y	S	S	N	S	0	00.	8.8 (4)
M02B1SZSSNS000.	M	02	B	1	S	Z	S	S	N	S	0	00.	8.8 (4)

## Pump Brand

M=Marathon

## Pump Size

02=¼"

## Check Valve Type

B=Ball

## Wetted Material

S=Stainless Steel

## Diaphragm/Check Valve Materials

5=Teflon-Buna  
One-Piece/Teflon  
6=Teflon-Buna  
One-Piece/Stainless Steel  
Y=Polyester backup/TFE/TFE  
Z=Polyester backup/TFE/  
Stainless Steel

## Check Valve Seat

S=Stainless Steel

## Non-Wetted Material Options

S=Stainless Steel

## Porting Options

N=NPT Threads

## Pump Style

S=Standard

## Pump Options

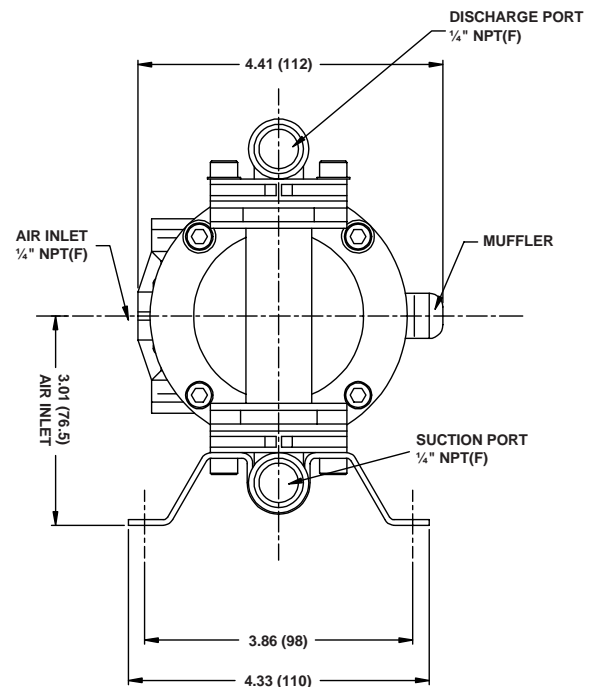
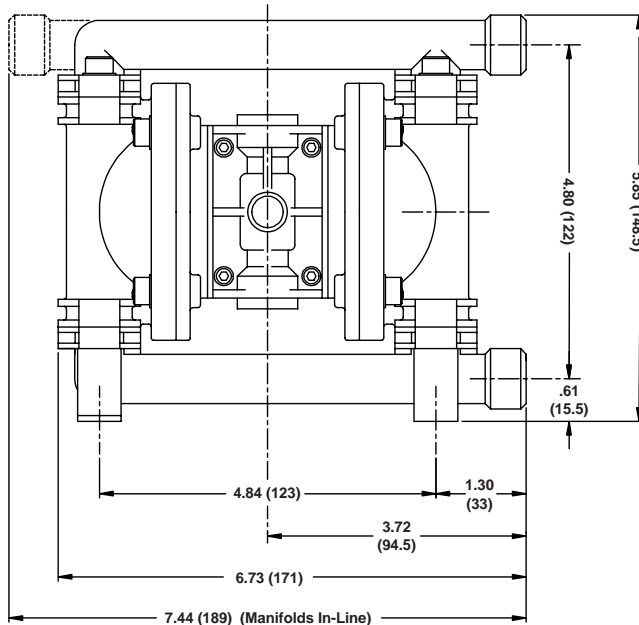
0=None

## Kit Options

00.=None

## Dimensions: M02

Dimensions in inches (metric)



## Materials

**Teflon®** Chemically inert, virtually impervious. Very few chemicals are known to react chemically with Teflon: molten alkali metals, turbulent liquid or gaseous fluorine and a few fluoro-chemicals such as chlorine trifluoride or oxygen difluoride which readily liberate free fluorine at elevated temperatures.

For specific applications, always consult "Chemical Resistance Chart" Technical Bulletin

## Operating Temperatures

### Maximum\*

212°F  
100°C

### Minimum\*

-35°F  
-37°C

### Optimum\*\*

50°F to 212°F  
10°C to 100°C

\* Definite reduction in service life.

\*\* Minimal reduction in service life at ends of range.