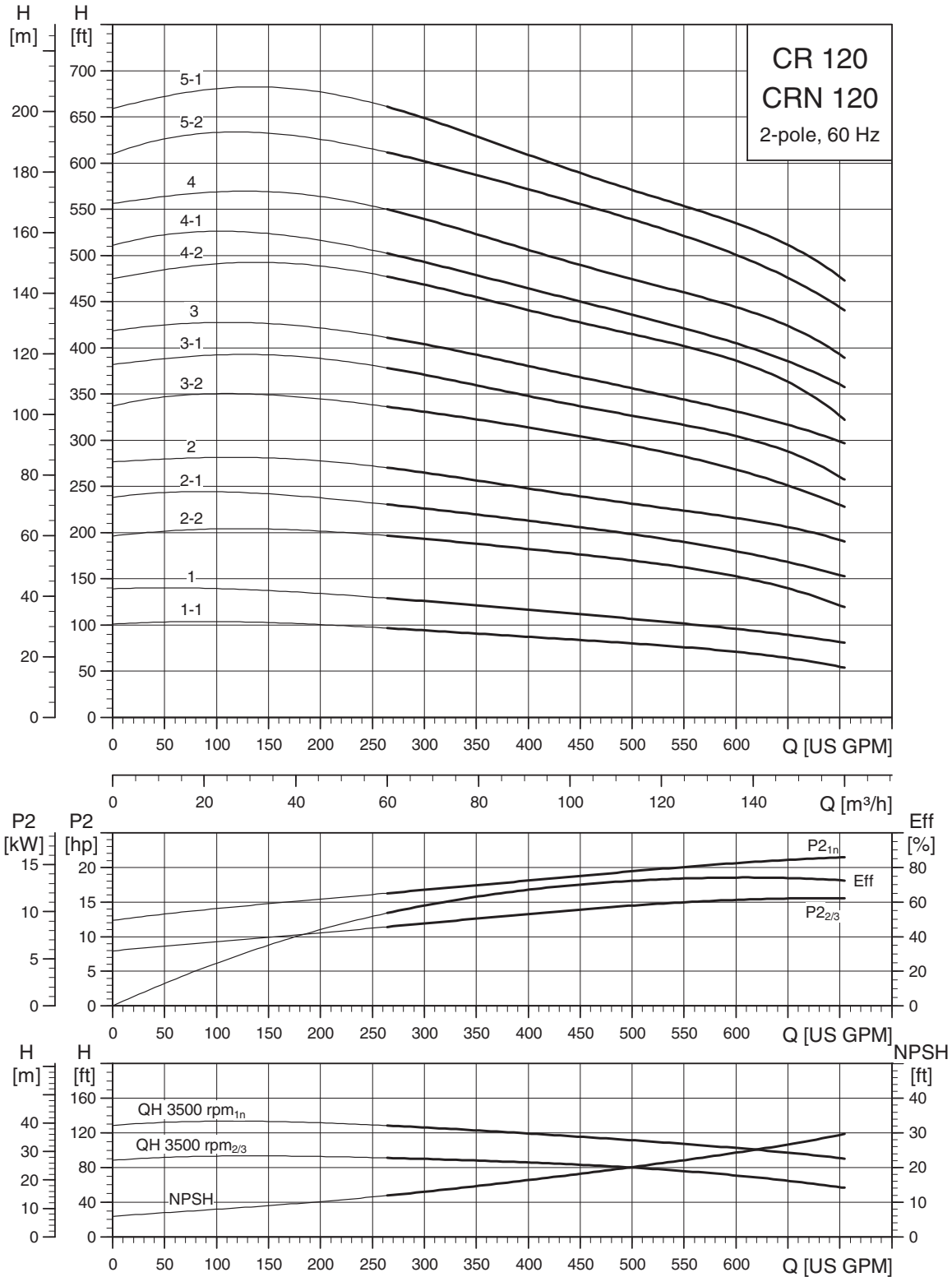
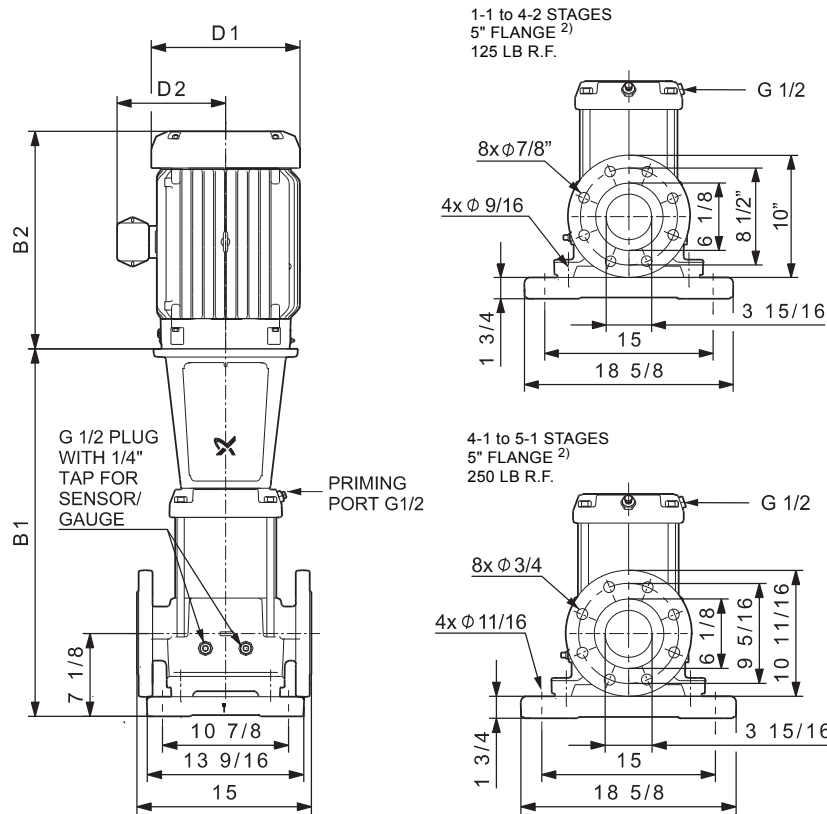


CR, CRN 120



TM03 9192 0209

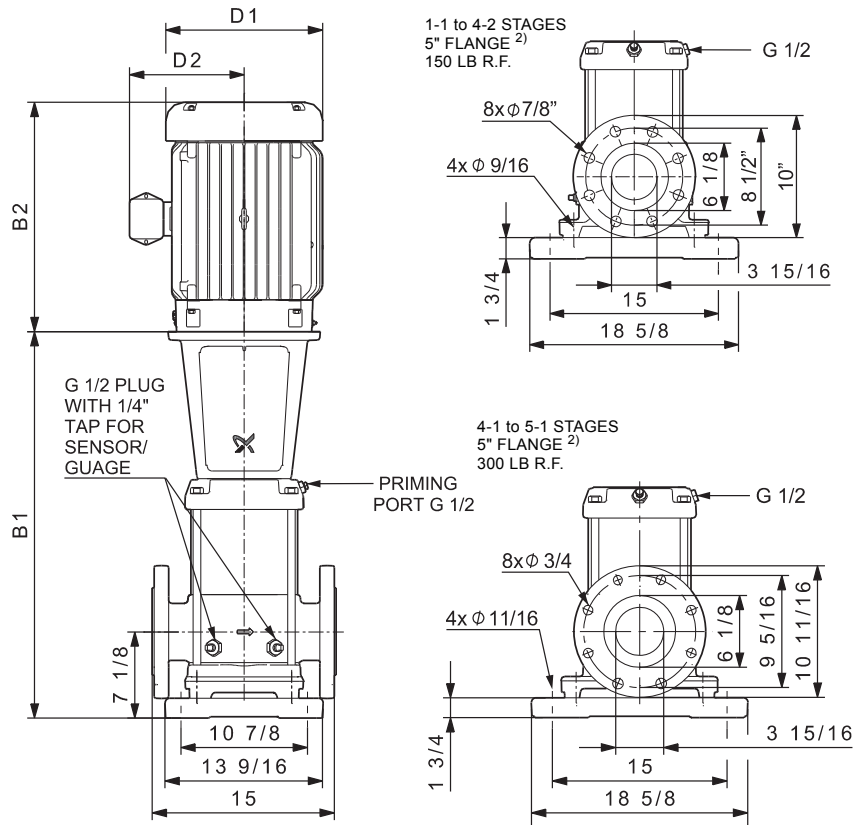


TM04 9630 4810

Pump type	P2 [hp]	Ph.	Dimensions [inch]									Ship Wt. [lbs.]
			B1	TEFC			ODP			Ship Wt. [lbs.]		
				D1	D2	B1+B2	D1	D2	B1+B2			
CR(E) 120-1-1	20	3	32.83	10.22	8.67	49.41	11.50	8.92	52.52	427		
CR(E) 120-1	25	3	32.83	12.94	11.52	52.65	11.50	8.94	53.64	507		
CR 120-2-2	40	3	38.98	15.32	13.11	62.17	13.25	12.21	62.23	704		
CR 120-2-1	40	3	38.98	15.32	13.11	62.17	13.25	12.21	62.23	704		
CR 120-2	50	3	38.98	16.88	14.12	66.79	13.25	12.21	61.73	735		
CR 120-3-2	60	3	45.08	19.00	14.90	75.87	15.12	13.19	71.21	936		
CR 120-3-1	60	3	45.08	19.00	14.90	75.87	15.12	13.19	71.21	936		
CR 120-3	75	3	45.08	19.00	14.90	75.87	15.18	13.19	71.21	1045		
CR 120-4-2	75	3	51.69	19.00	14.90	82.48	15.18	13.19	77.82	1199		
CR 120-4-1	100	3	51.69	19.00	17.38	82.51	15.12	13.19	79.07	1468		
CR 120-4	100	3	51.69	19.00	17.38	82.51	15.12	13.19	79.07	1468		
CR 120-5-2	100	3	57.80	19.00	17.38	88.62	15.12	13.19	85.18	1490		

Dimensions [inch]				Ship Wt. [lbs.]
MLE			Ship Wt. [lbs.]	
D1	D2	B1+B2		
13.39	12.13	51.61	534	
13.39	12.13	55.55	561	
-	-	-	-	
-	-	-	-	
-	-	-	-	
-	-	-	-	
-	-	-	-	
-	-	-	-	
-	-	-	-	
-	-	-	-	

1) Weights are based on pump with TEFC motor (see price list for individual weights).
 2) CR 5" flange is not manufactured to ANSI specification. Gasket contact surface is approximately 0.25". CR 6" ANSI flange adapter is manufactured to ANSI B16.5 specification.
 All dimensions in inches unless otherwise noted.



TM04 9631 4810

Pump type	P2 [hp]	Ph.	Dimensions [inch]									Dimensions [inch]			
			B1	TEFC			ODP			Ship Wt. [lbs.]	MLE			Ship Wt. [lbs.]	
				D1	D2	B1+B2	D1	D2	B1+B2		D1	D2	B1+B2		
CRN(E) 120-1-1	20	3	32.83	10.22	8.67	49.41	11.50	8.92	52.52	434	13.39	12.13	51.61	541	
CRN(E) 120-1	25	3	32.83	12.94	11.52	52.65	11.50	8.94	53.64	514	13.39	12.13	55.55	568	
CRN 120-2-2	40	3	38.98	15.32	13.11	62.17	13.25	12.21	62.23	711	-	-	-	-	
CRN 120-2-1	40	3	38.98	15.32	13.11	62.17	13.25	12.21	62.23	711	-	-	-	-	
CRN 120-2	50	3	38.98	16.88	14.12	66.79	13.25	12.21	61.73	742	-	-	-	-	
CRN 120-3-2	60	3	45.08	19.00	14.90	75.87	15.12	13.19	71.21	943	-	-	-	-	
CRN 120-3-1	60	3	45.08	19.00	14.90	75.87	15.12	13.19	71.21	943	-	-	-	-	
CRN 120-3	75	3	45.08	19.00	14.90	75.87	15.18	13.19	71.21	1052	-	-	-	-	
CRN 120-4-2	75	3	51.69	19.00	14.90	82.48	15.18	13.19	77.82	1206	-	-	-	-	
CRN 120-4-1	100	3	51.69	19.00	17.38	82.51	15.12	13.19	79.07	1475	-	-	-	-	
CRN 120-4	100	3	51.69	19.00	17.38	82.51	15.12	13.19	79.07	1475	-	-	-	-	
CRN 120-5-2	100	3	57.8	19.00	17.38	88.62	15.12	13.19	85.18	1497	-	-	-	-	

¹⁾ Weights are based on pump with TEFC motor (see price list for individual weights).

²⁾ CR 5" flange is not manufactured to ANSI specification. Gasket contact surface is approximately 0.25". CR 6" ANSI flange adapter is manufactured to ANSI B16.5 specification.

All dimensions in inches unless otherwise noted.